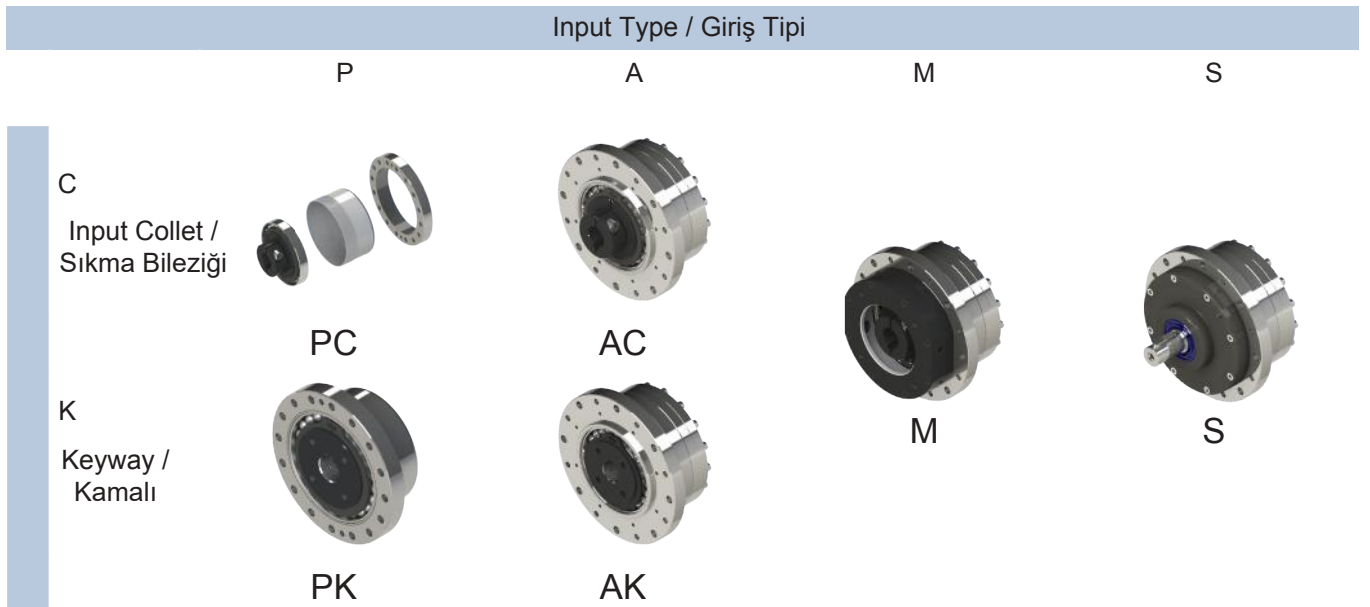


# DSF series / serileri



## Indication of Model Numbers / Model Seçimi

DSF	14	P	C	70	MOTOR
Type	Model	Input / Giriş	Input Style / Motor Bağlantı Şekli	Ratio / Çevrim	Motor Type / Tipi
DSF	14 17 20 25 32	P A M S	C K	1/50 ~ 1/120	Motor Brand & Model No. / Motor Markası & Modeli

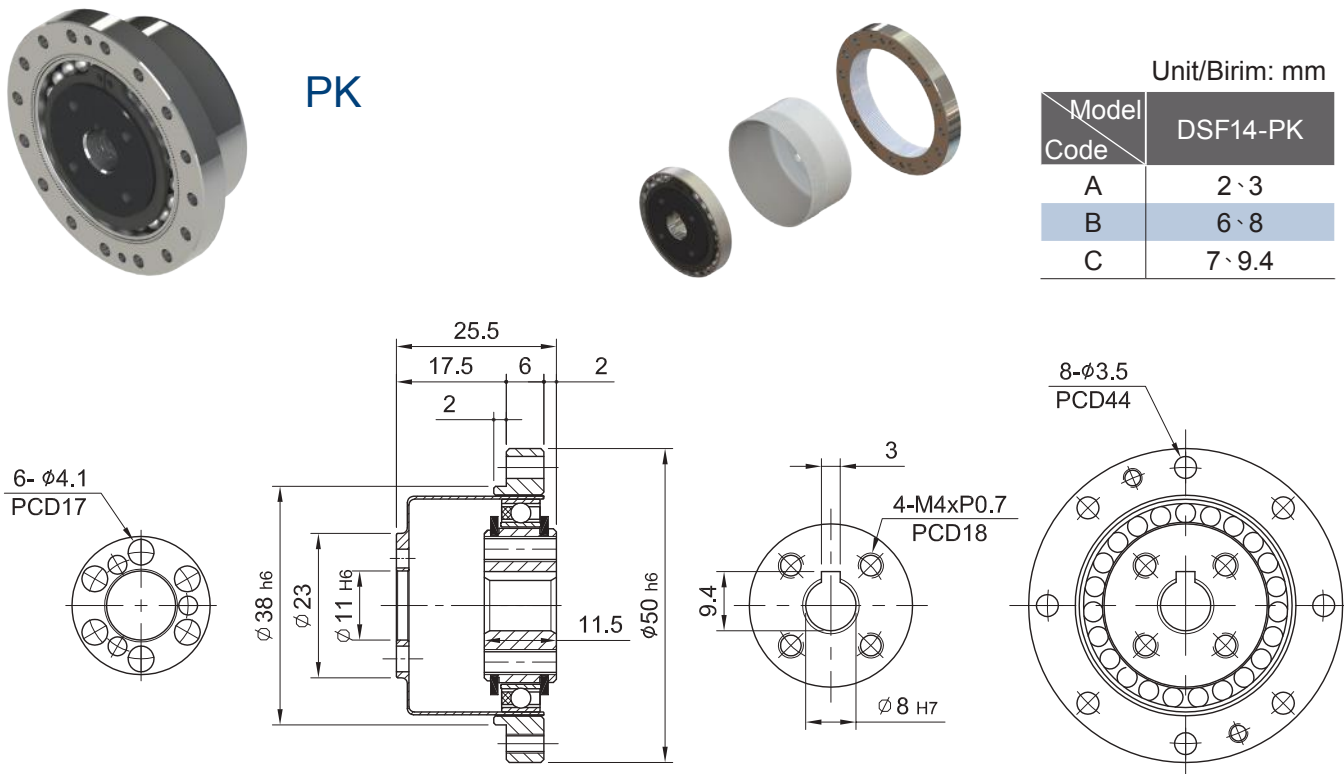
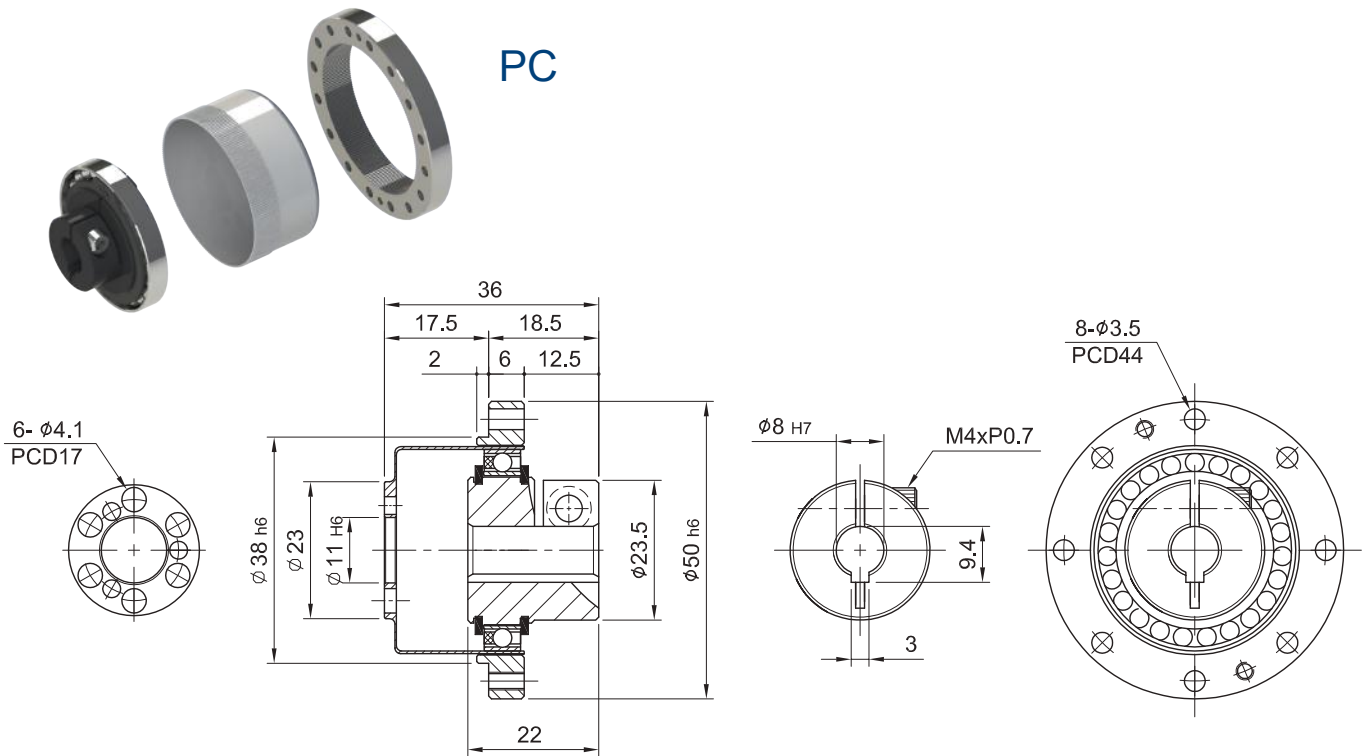


# DSF Series / Serileri

Model No.	Unit / Birim	Ratio / Çevrim	14	17	20	25	32
Nominal Output Torque / Nominal Çıkış Torku	Nm	50	7	21	32	51	98
		80	9	28	44	82	157
		100	9	31	52	87	176
		120	9	31	52	87	176
Max. Output Torque / Max. Çıkış Torku	Nm	50~120	2.5 Times of Rated Output Torque / 2,5 x Nominal çıkış Torku				
Emergency Stop Torque / Acil Durdurma Torku	Nm	50~120	3.5 Times of Rated Output Torque / 3,5 x Nominal Çıkış Torku				
Nominal Input Speed / Nominal Giriş Devri	rpm	50~120	3,000	3,000	3,000	3,000	3,000
Backlash / Boşluk Oranı	arcsec	50~120	≤ 20				
No-Load Torque / Yüksüz Moment	Nm	50~120	0.1	0.1	0.2	0.31	0.56
Reducer Inertia / Atalet	Ix10-4kgm <sup>2</sup>	50~100	0.049	0.079	0.193	0.413	1.69
	Jx10-5kgm <sup>2</sup>	100~120	0.040	0.081	0.197	0.421	1.72
Torsional Rigidity / Burulma Direnci	Nm / arcmin	50~120	0.02	0.04	0.067	0.13	0.29
Max. Radial Force / Max. Radyal Yük	N	50~120	1416	2361	2626	4331	6732
Max. Axial Force / Max. Aksiyel Yük	N	50~120	708	1180	1313	2165	3366
Service Life / Hizmet Ömrü	hr	50~120	>10,000				
Operating Temperature / Çalışma Sıcaklığı	°C	50~120	Environment / Çevre -10°C ~ +70°C / Max. Temperature / Sıcaklık 90°C				
Lubrication / Yağlama		50~100	Synthetic Grease / Sentetik Gres No.2				
Noise Level / Ses Seviyesi	dB	50~120	52	52	53	55	60
Weight / Ağırlık	Kg	50~120					

# MODEL : DSF14

RATIO / ÇEVİRİM : 50.80.100.120

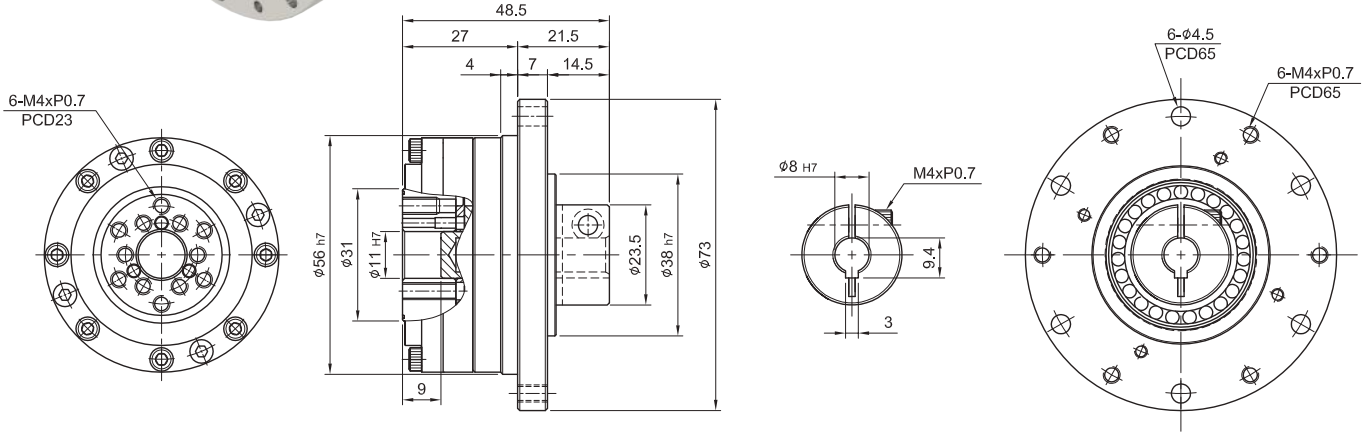


# MODEL : DSF14

RATIO / ÇEVİRİM : 50.80.100.120



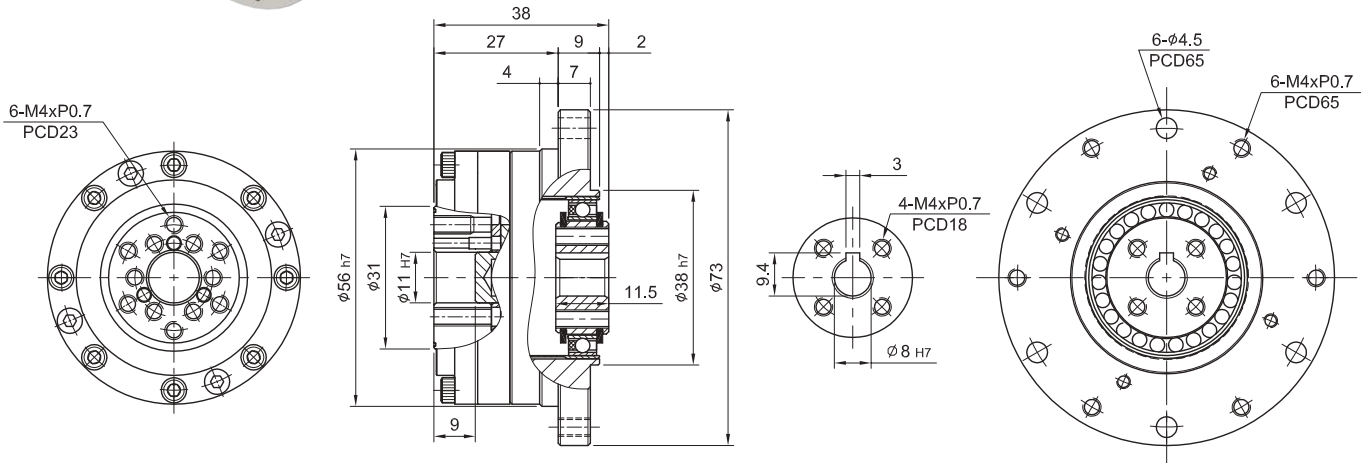
AC



AK

Unit/Birim: mm

Model Code	DSF14-AK
A	2-3
B	6-8
C	7-9.4

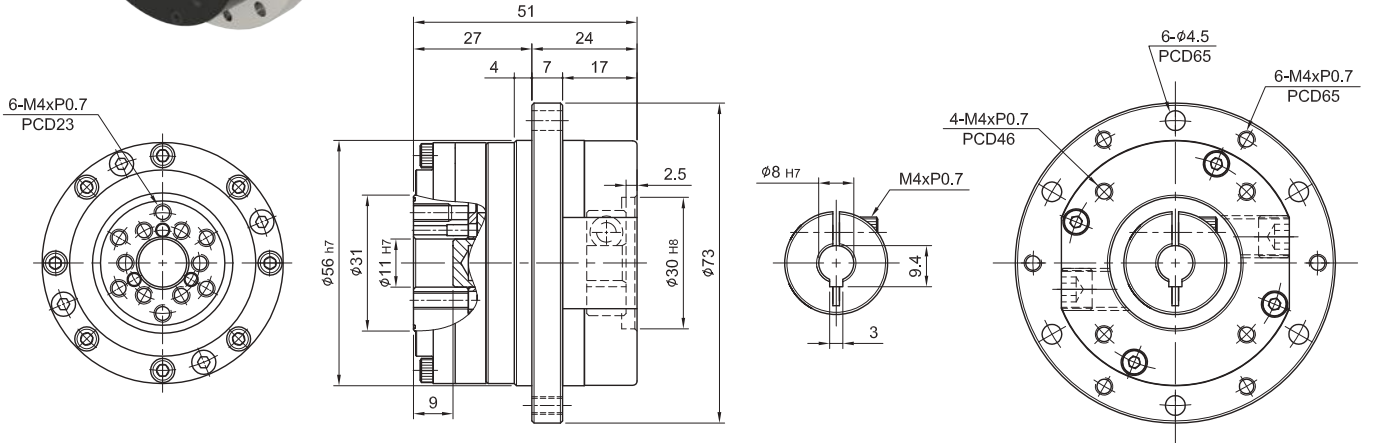


# MODEL : DSF14

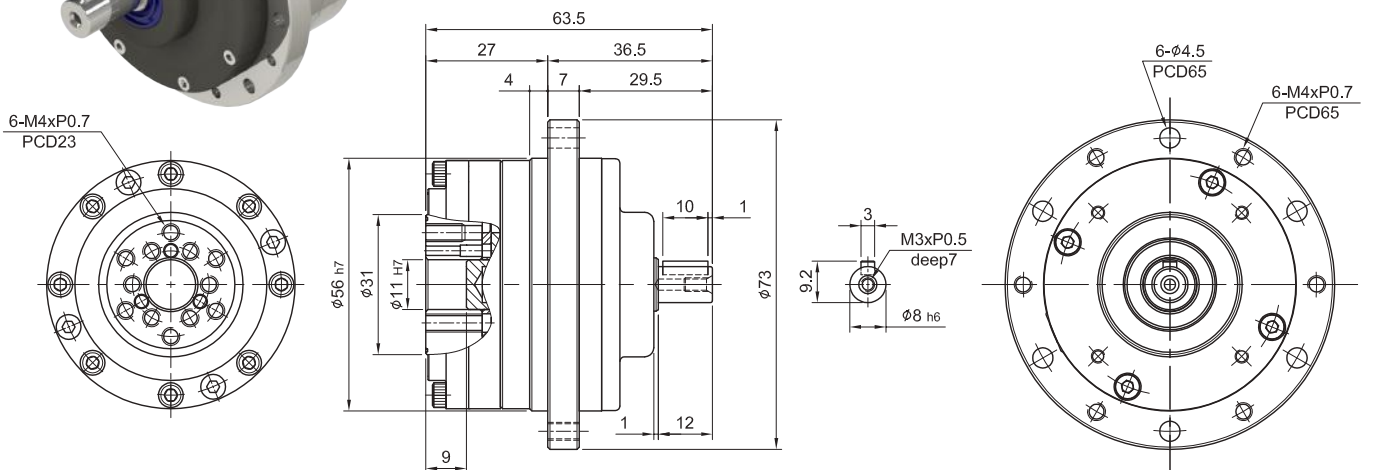
RATIO / ÇEVİRİM : 50.80.100.120



M

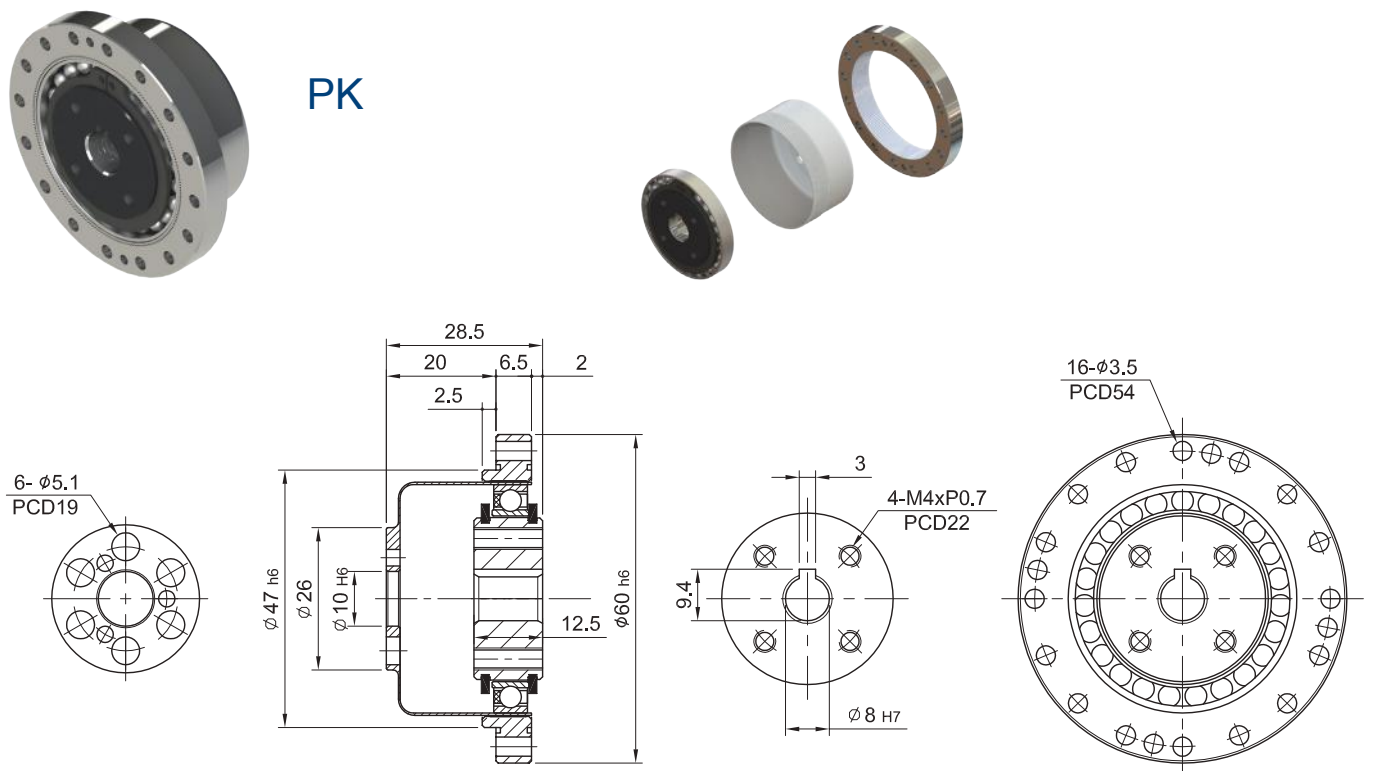
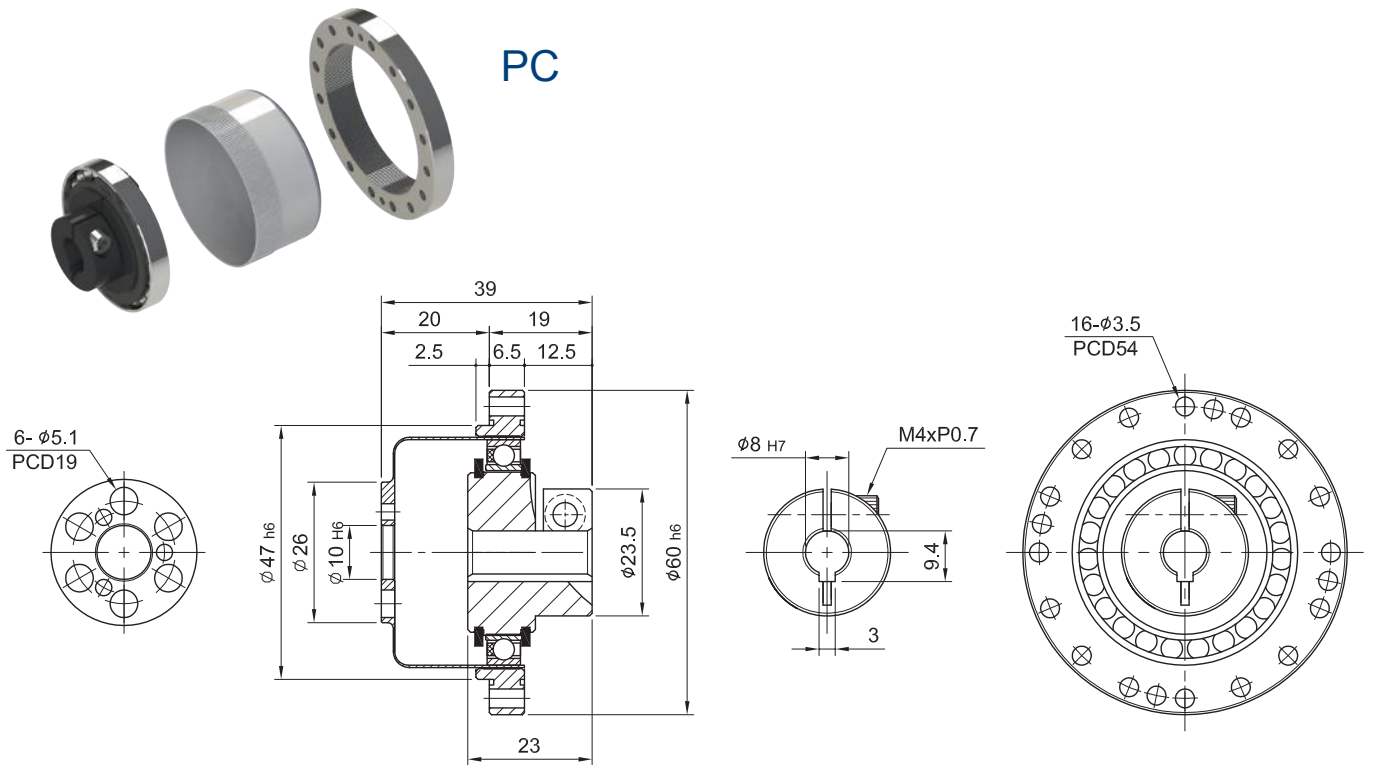


S



# MODEL : DSF17

RATIO / ÇEVİRİM : 50.80.100.120



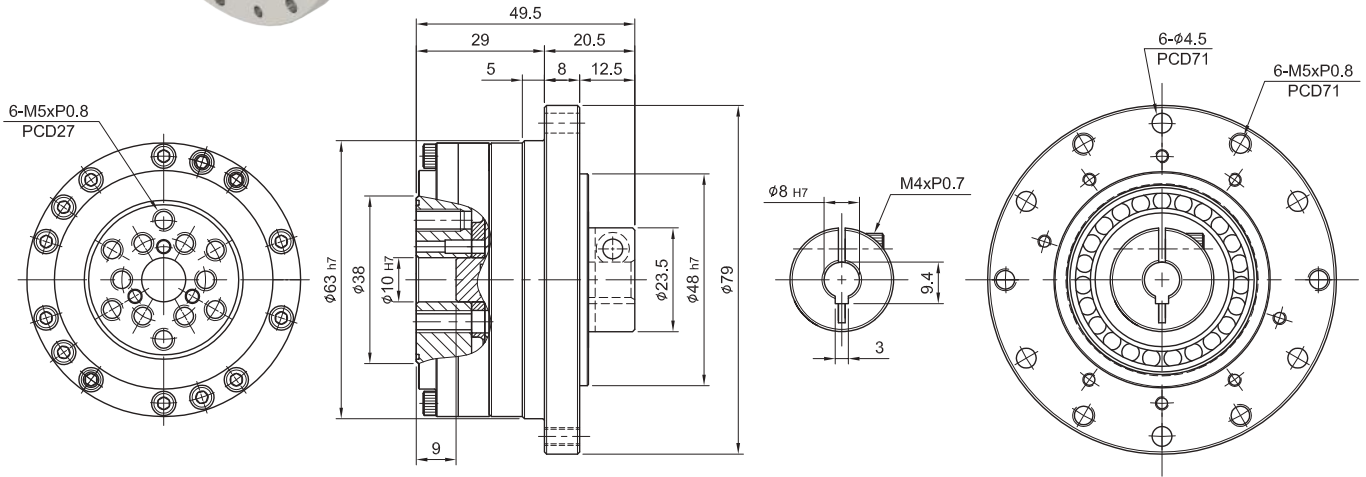


# MODEL : DSF17

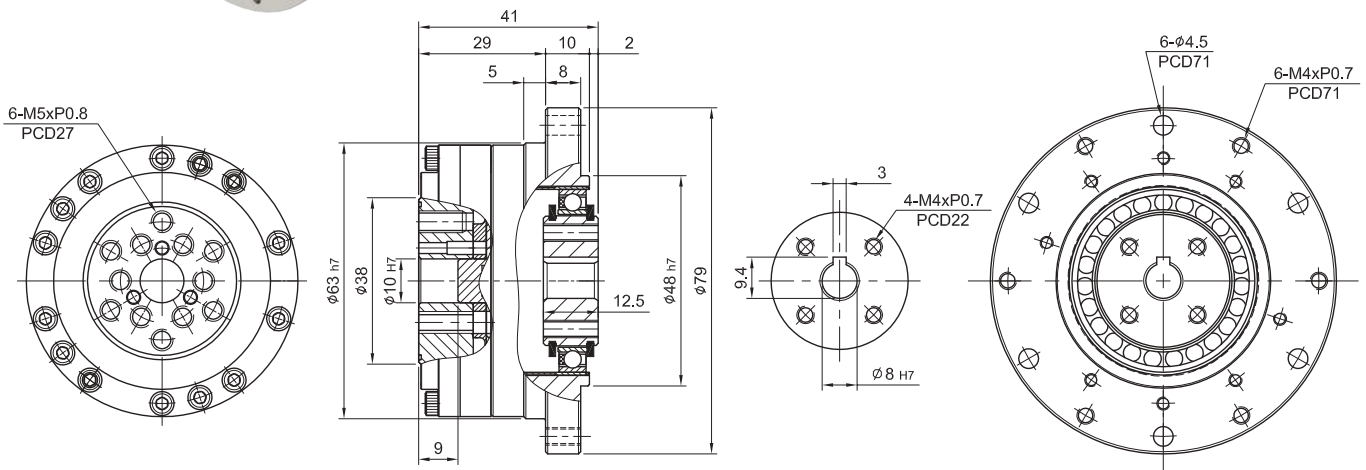
RATIO / ÇEVİRİM : 50.80.100.120



AC



AK

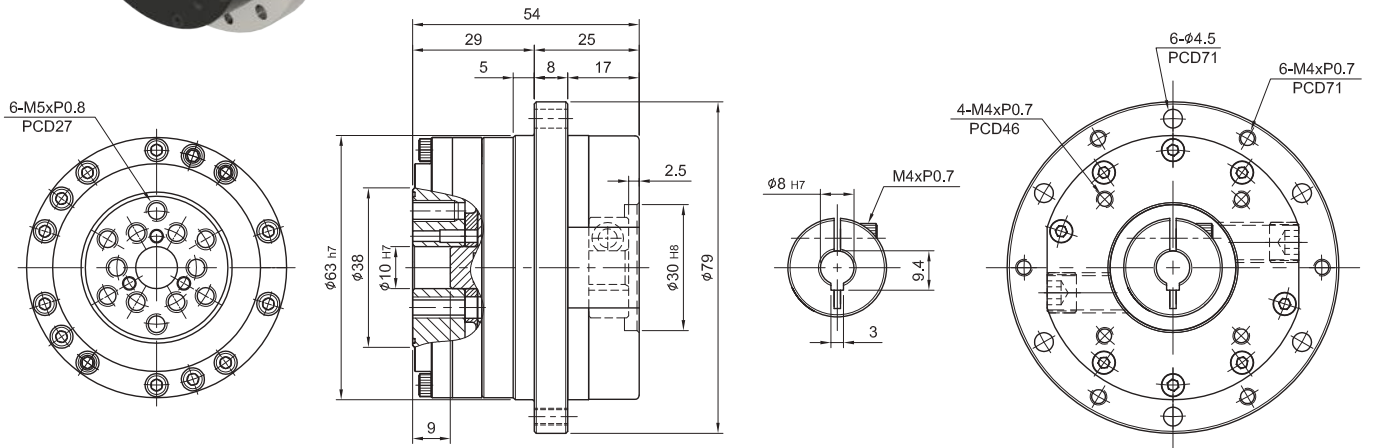


# MODEL : DSF17

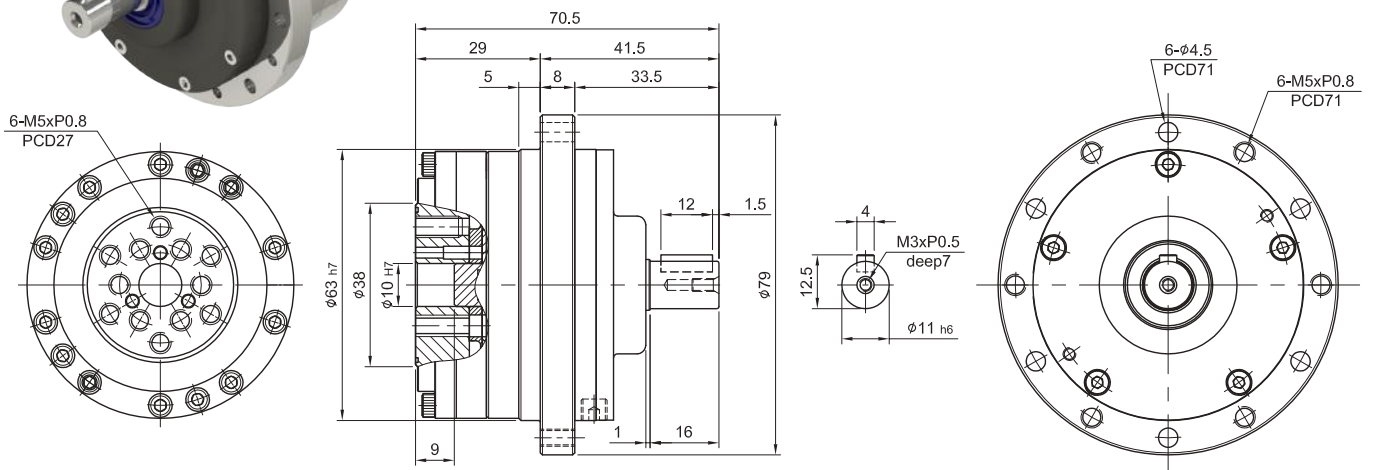
RATIO / ÇEVİRİM : 50.80.100.120



M



S





# MODEL : DSF20

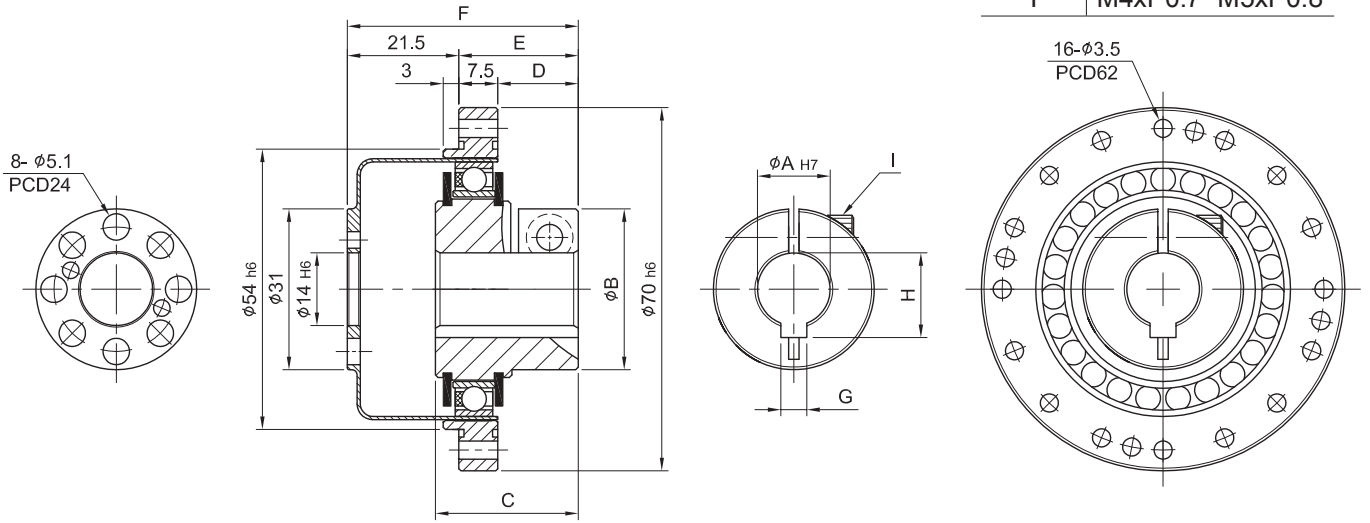
RATIO / ÇEVİRİM : 50.80.100.120



PC

Unit/Birim: mm

Model Code	DSF20-PC
A	8 · 14
B	23.5 · 31
C	23.5 · 27.5
D	13.5 · 15.5
E	21 · 23
F	42.5 · 44.5
G	3 · 5
H	9.4 · 16.3
I	M4xP0.7 · M5xP0.8

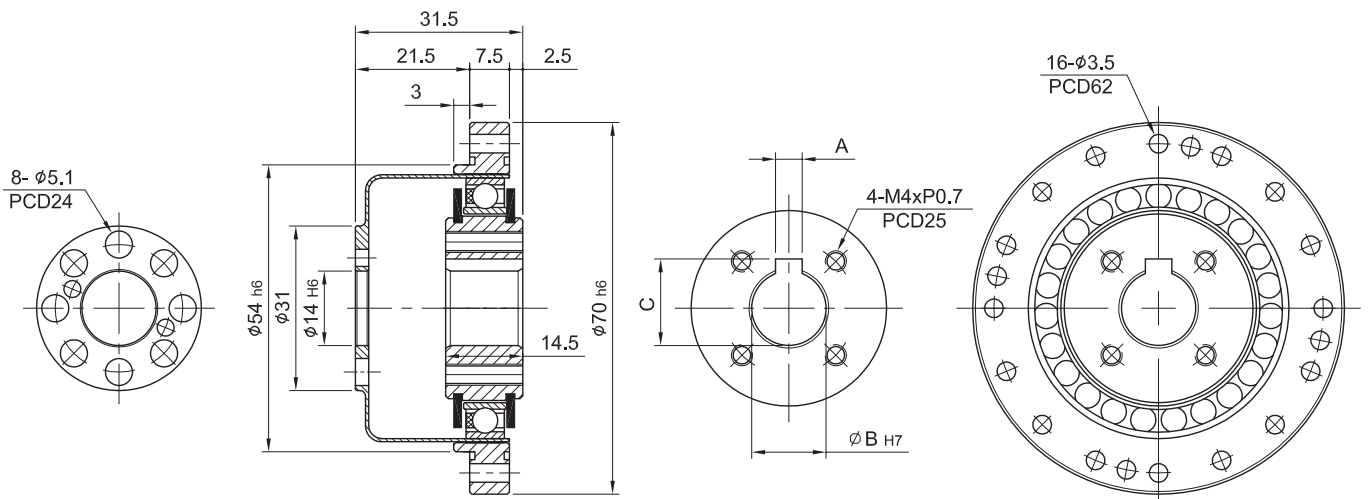


PK



Unit/Birim: mm

Model Code	DSF20-PK
A	3 · 5
B	8 · 14
C	9.4 · 16.3



# MODEL : DSF20

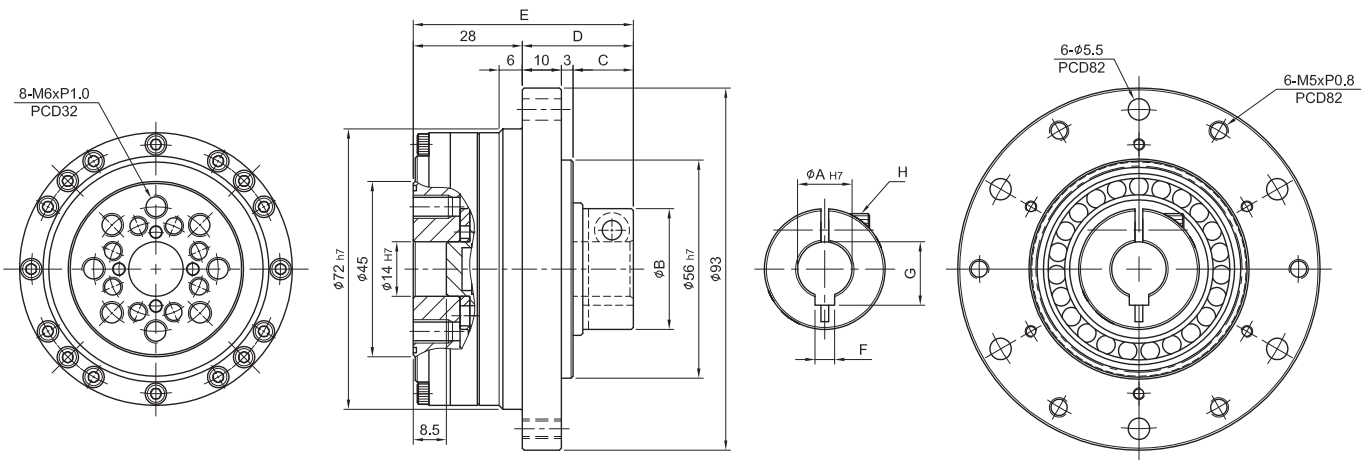
RATIO / ÇEVİRİM : 50.80.100.120



AC

Unit/Birim: mm

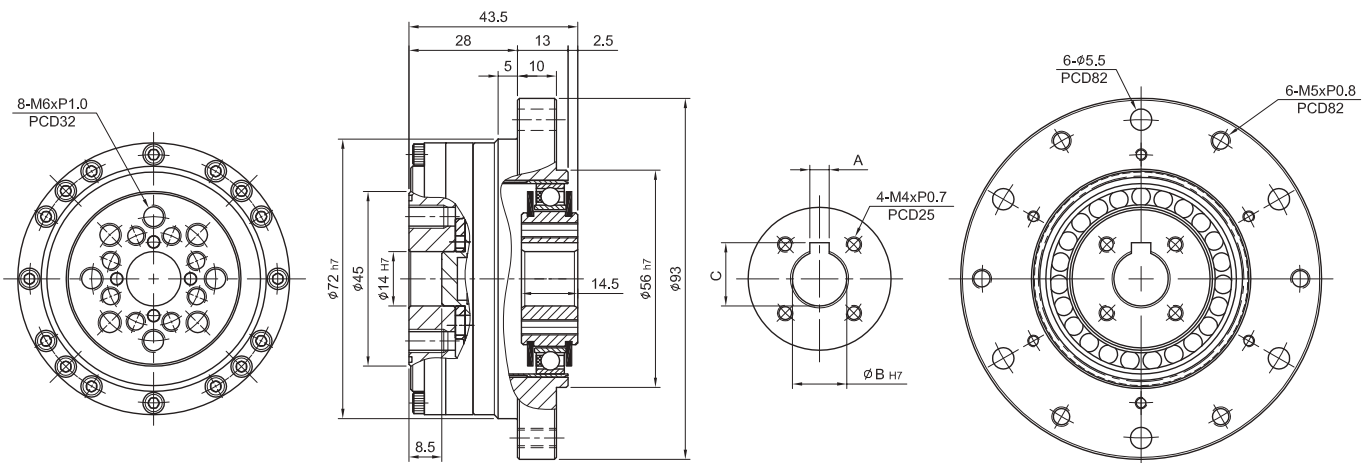
Model Code	DSF20-AC
A	8 · 14
B	23.5 · 31
C	13.5 · 15.5
D	26.5 · 28.5
E	54.5 · 56.5
F	3 · 5
G	9.4 · 16.3
H	M4xP0.7 · M5xP0.8



AK

Unit/Birim: mm

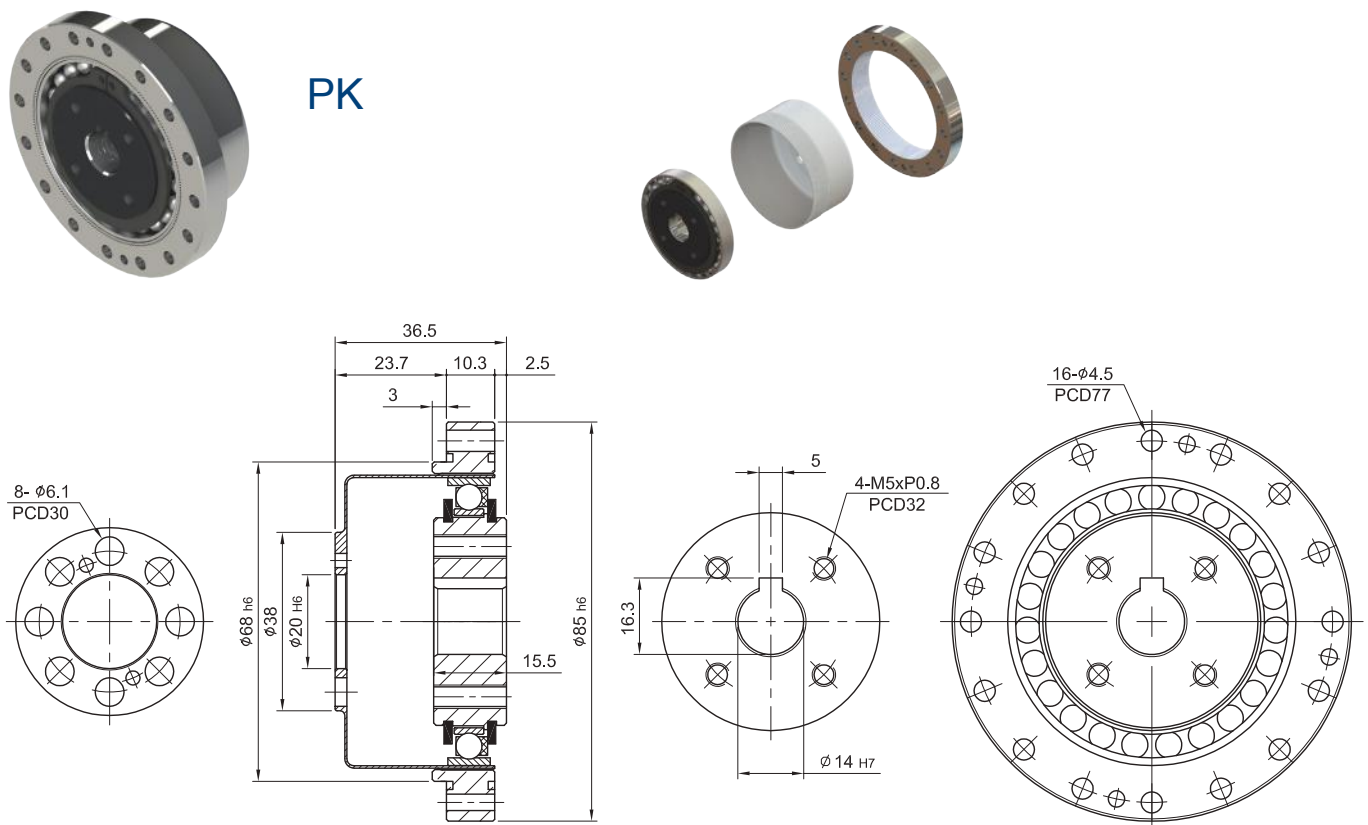
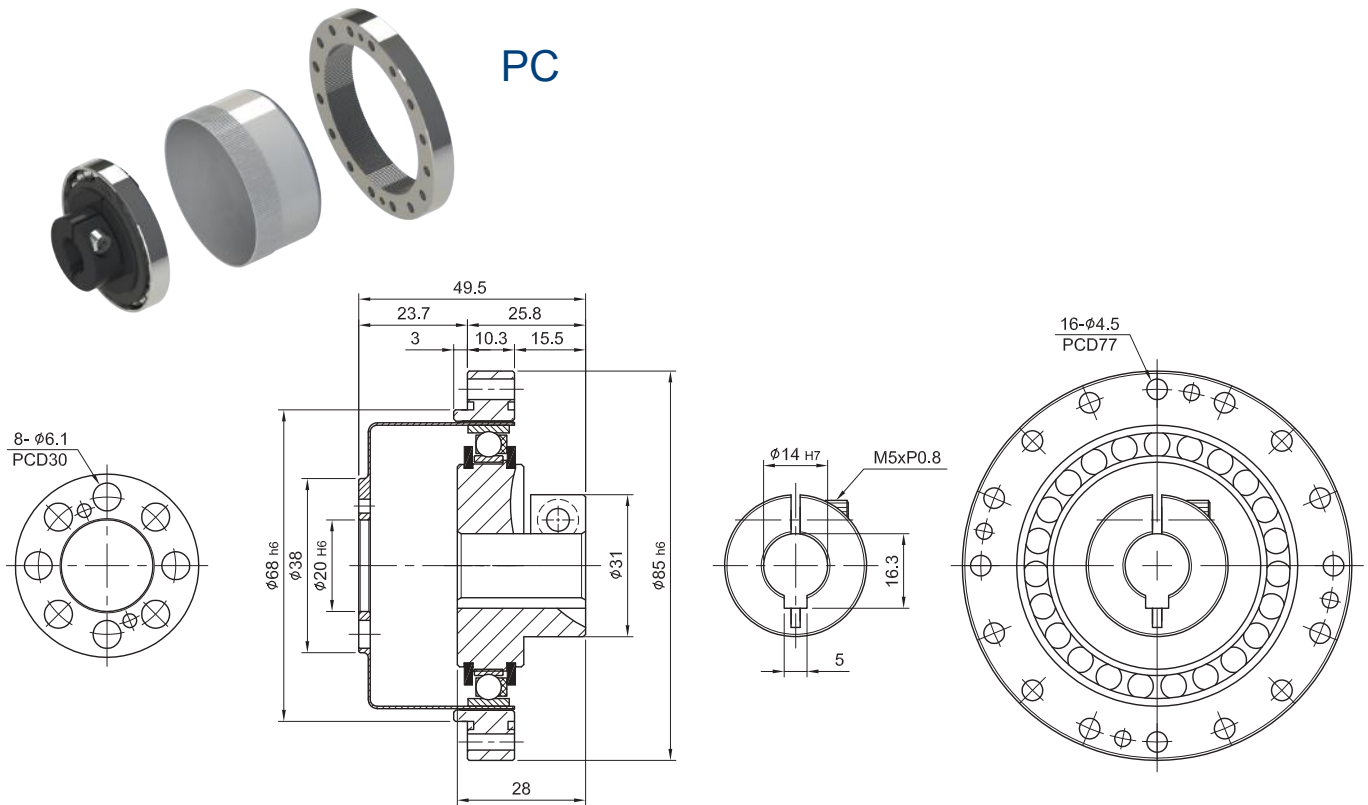
Model Code	DSF20-AK
A	3 · 5
B	8 · 14
C	9.4 · 16.3





# MODEL : DSF25

RATIO / ÇEVİRİM : 50.80.100.120

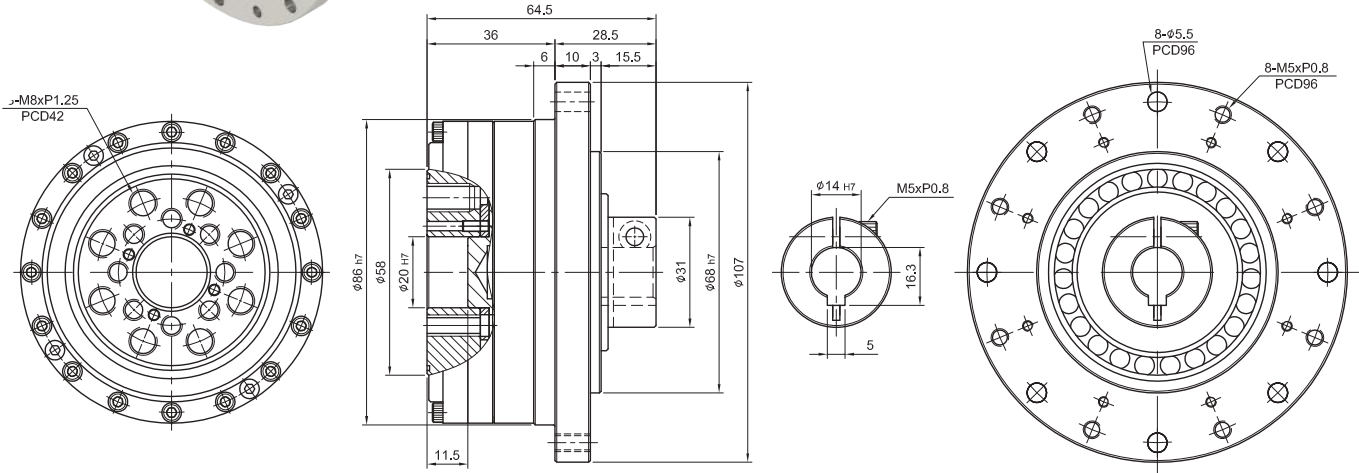


# MODEL : DSF25

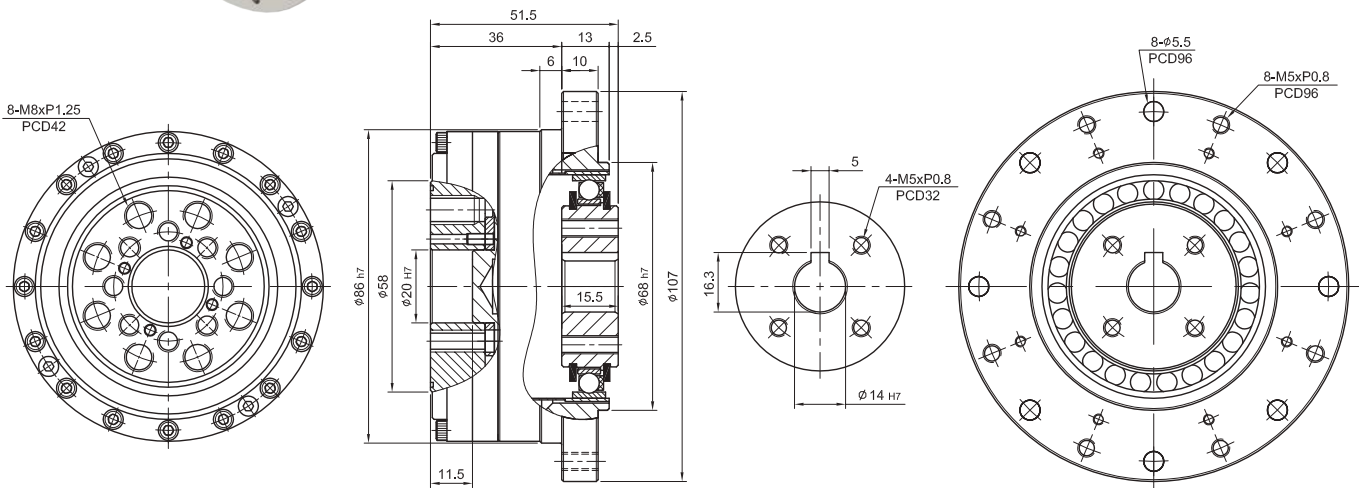
RATIO / ÇEVİRİM : 50.80.100.120



AC



AK



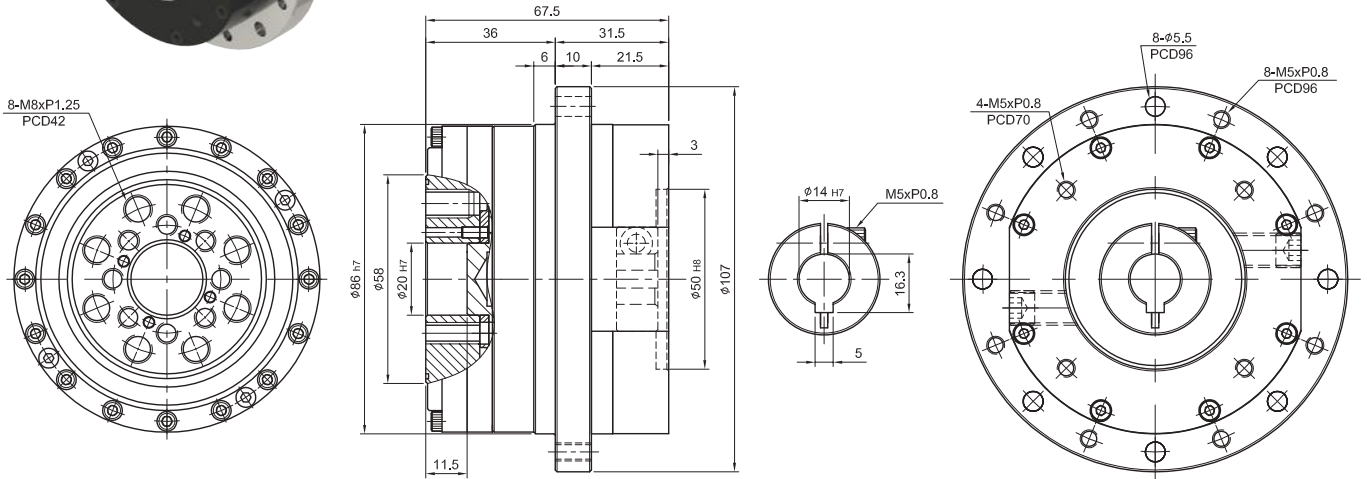


# MODEL : DSF25

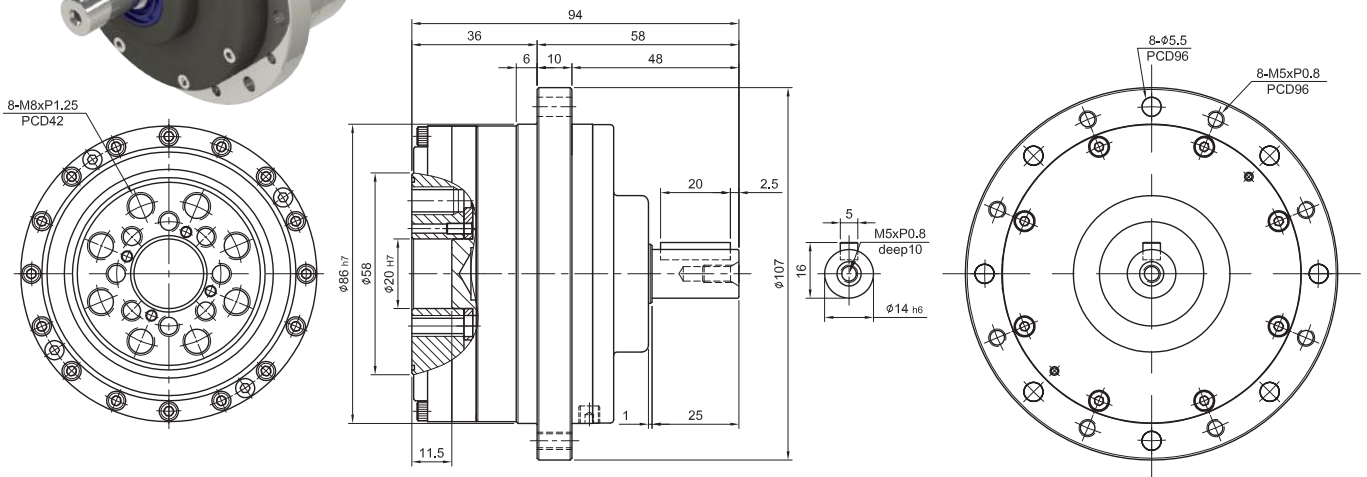
RATIO / ÇEVİRİM : 50.80.100.120



M



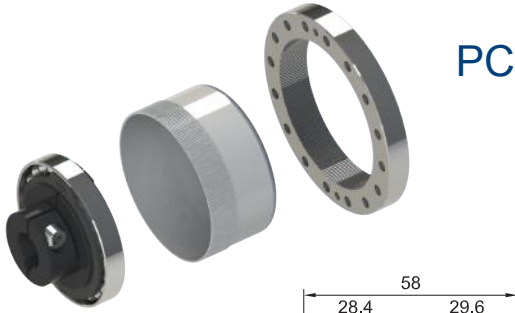
S





# MODEL : DSF32

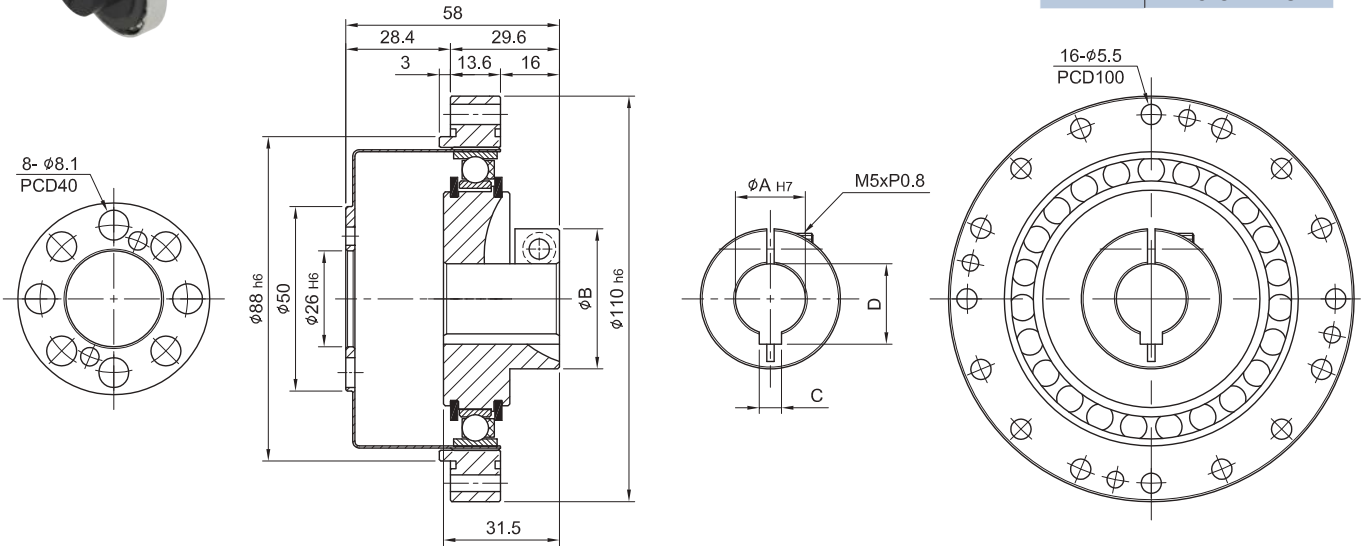
RATIO / ÇEVİRİM : 50.80.100.120



PC

Unit/Birim: mm

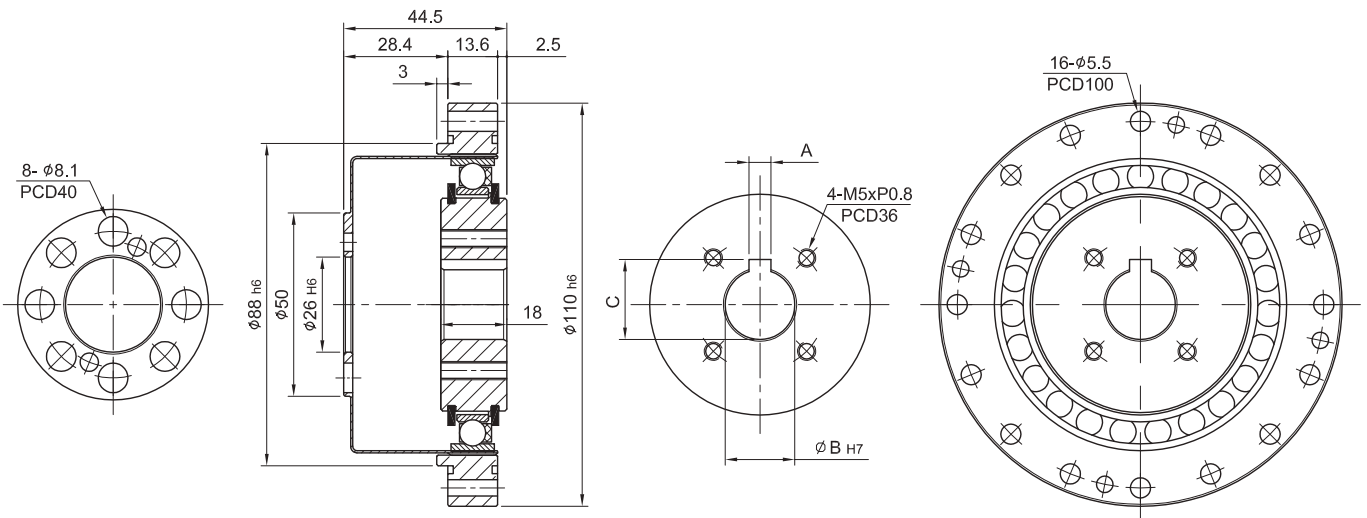
Model Code	DSF32-PC
A	14 · 19
B	34 · 38
C	5 · 6
D	16.3 · 21.8



PK

Unit/Birim: mm

Model Code	DSF32-PK
A	5 · 6
B	14 · 19
C	16.3 · 21.8



# MODEL : DSF32

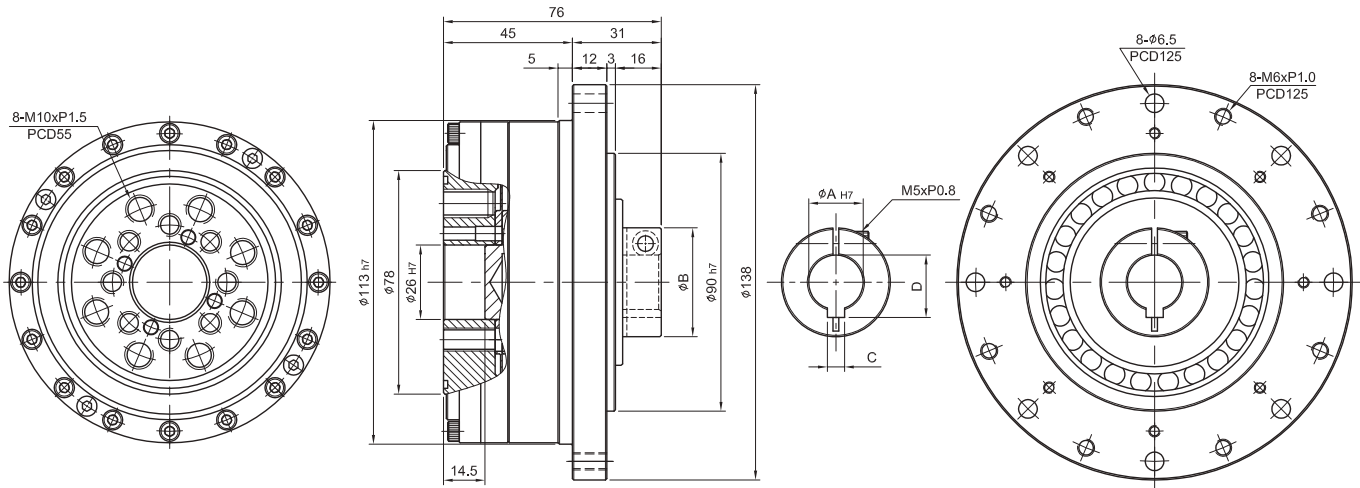
RATIO / ÇEVİRİM : 50.80.100.120



AC

Unit/Birim: mm

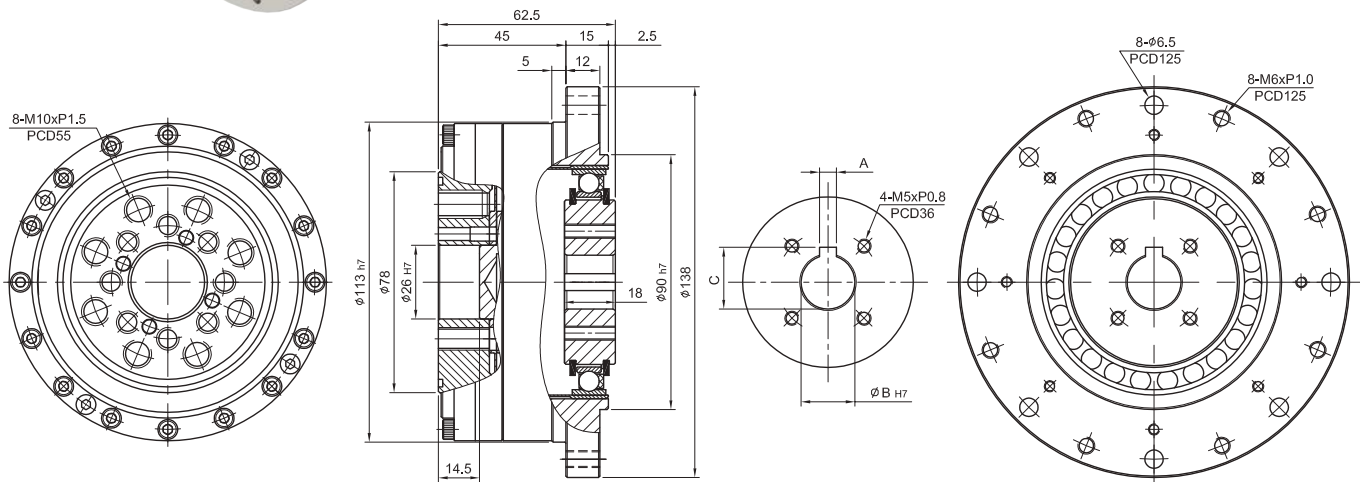
Model Code	DSF32-AC
A	14 · 19
B	34 · 38
C	5 · 6
D	16.3 · 21.8



AK

Unit/Birim: mm

Model Code	DSF32-AK
A	5 · 6
B	14 · 19
C	16.3 · 21.8



# MODEL : DSF32

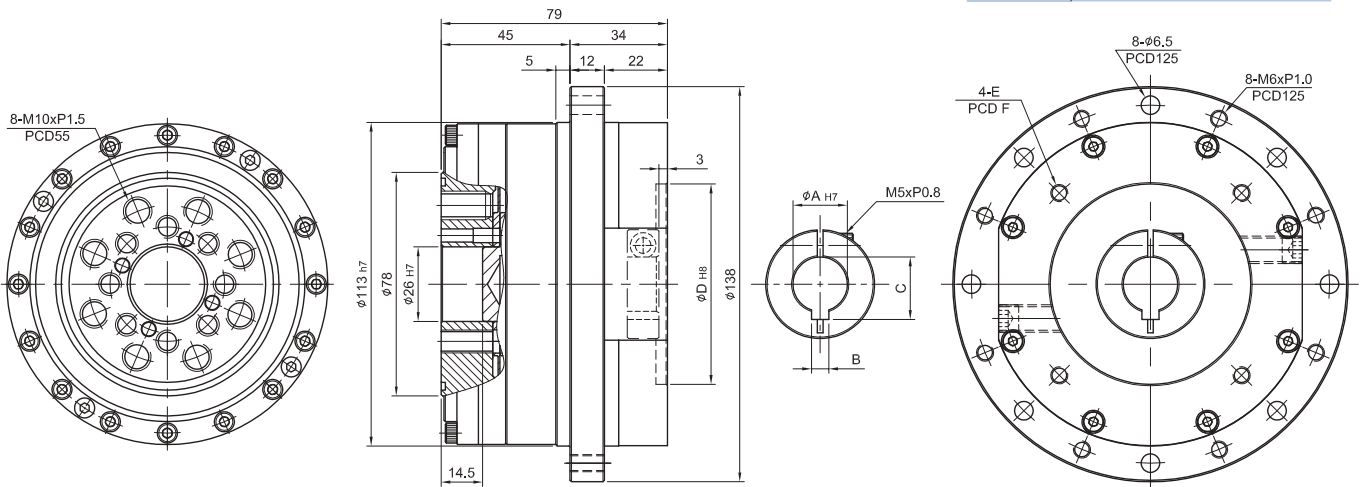
RATIO / ÇEVİRİM : 50.80.100.120



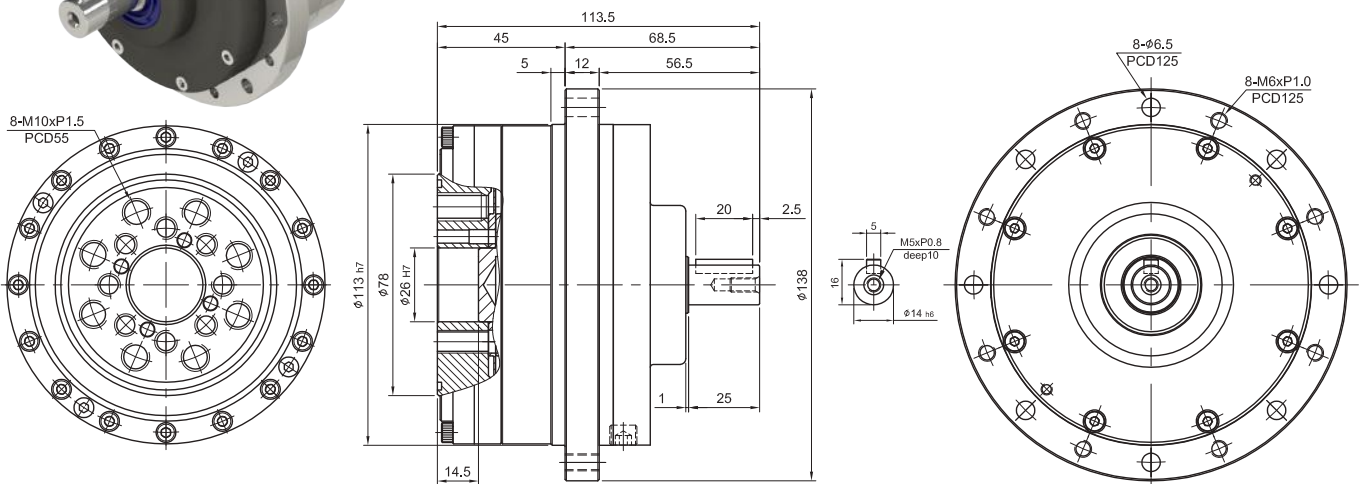
M

Unit/Birim: mm

Model Code	DSF32-M
A	14 · 19
B	5 · 6
C	16.3 · 21.8
D	50 · 70
E	M5xP0.8 · M6xP1.0
F	70 · 90



S



# DHF series / serileri



## Indication of Model Numbers / Model Seçimi

DHF	17	A	C	100	MOTOR
Type	Model	Input / Giriş	Input Style / Motor Bağlantı Şekli	Ratio / Çevrim	Motor Type / Tipi
DHF	17 20 25 32 40 45	A O S	C K O	1/50 ~ 1/120	Motor Brand & Model No. / Motor Markası & Modeli

### Input Type / Giriş

A

O

S

C

Input Collet / Sıkma Bileziği



AC

K

Keyway / Kamalı



AK

O

Hollow Input Shaft / Delik Milli



AO



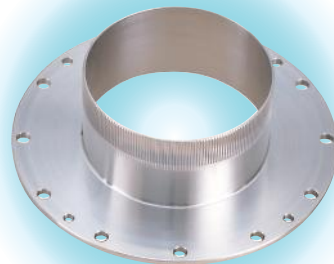
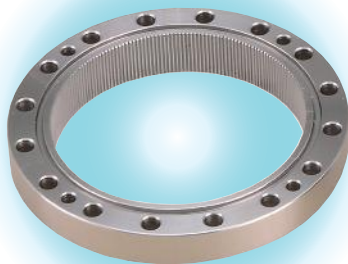
O



S

# DHF series / serileri

Model No.	Unit / Birim	Ratio / Çevrim	17	20	25	32	40
Nominal Output Torque / Nominal Çıkış Torku	Nm	50	21	32	51	98	176
		80	28	44	82	157	265
		100	31	52	87	176	343
		120	31	52	87	176	382
Max. Output Torque / Max. Çıkış Torku	Nm	50~120	2.5 Times of Rated Output Torque / 2,5 x Nominal çıkış Torku				
Emergency Stop Torque / Acil Durdurma Torku	Nm	50~120	3.5 Times of Rated Output Torque / 3,5 x Nominal Çıkış Torku				
Nominal Input Speed / Nominal Giriş Devri	rpm	50~120	3,500	3,500	3,500	3,500	3,000
Backlash / Boşluk Oranı	arcsec	50~120	≤ 20				
No-Load Torque / Yüksüz Moment	Nm	50~120	2.7/0.26	4.7/0.46	8/0.79	16/1.58	32/3.16
Reducer Inertia / Atalet	Ix10-4kgm <sup>2</sup>	50~100	0.054	0.090	0.282	1.09	2.85
		Jx10-5kgm <sup>2</sup>	100~120	0.055	0.092	0.288	1.11
Torsional Rigidity / Burulma Direnci	Nm / arcmin	50~120	0.045	0.067	0.13	0.29	0.53
Max. Radial Force / Max. Radyal Yük	N	50~120	3136	6732	9496	11828	15758
Max. Axial Force / Max. Aksiyel Yük	N	50~120	1568	3366	4748	5914	7879
Service Life / Hizmet Ömrü	hr	50~120	>10,000				
Operating Temperature / Çalışma Sıcaklığı	°C	50~120	Environment / Çevre -10°C ~ +70°C / Max.Temperature / Sıcaklık 90°C				
Lubrication / Yağlama		50~100	Synthetic Grease / Sentetik Gres No.2				
Noise Level / Ses Seviyesi	dB	50~120	52	53	55	60	63
Weight / Ağırlık	Kg	50~120					



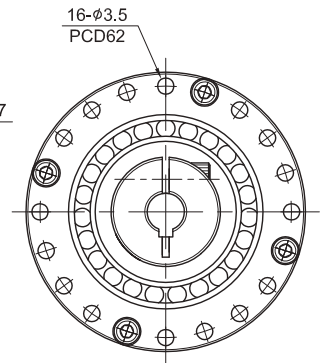
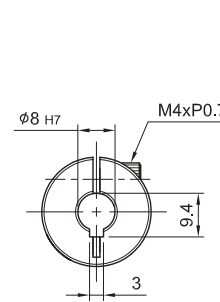
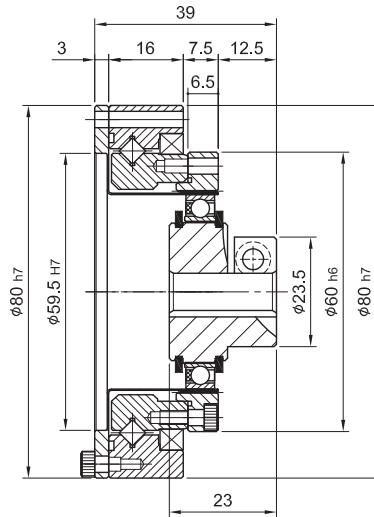
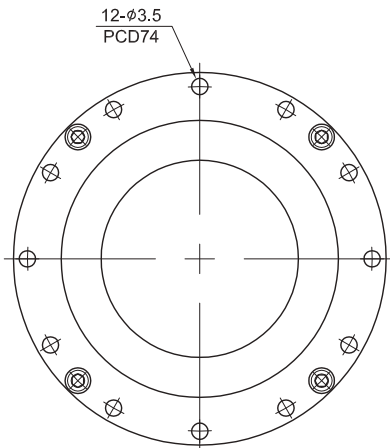


# MODEL : DHF17

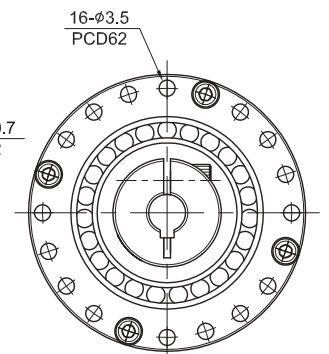
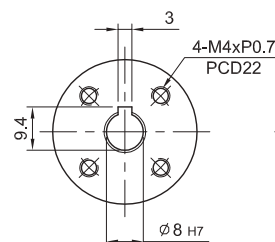
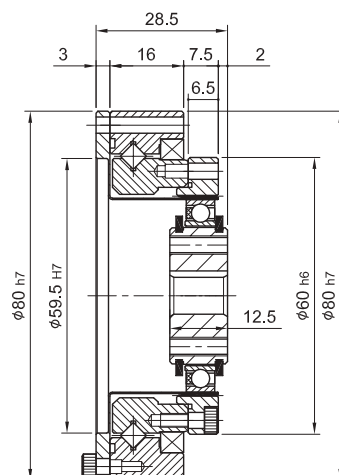
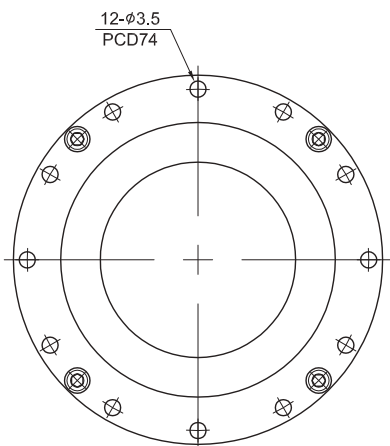
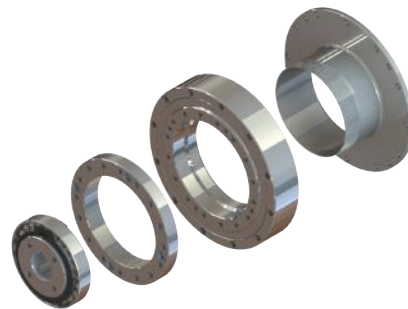
RATIO / ÇEVİRİM : 50.80.100.120



AC



AK



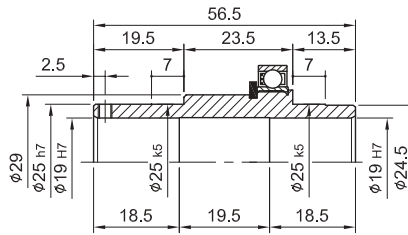
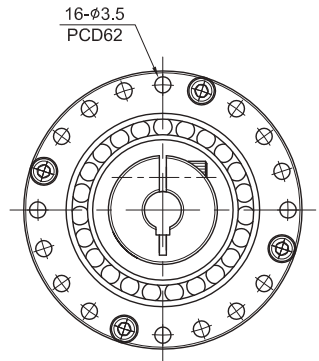
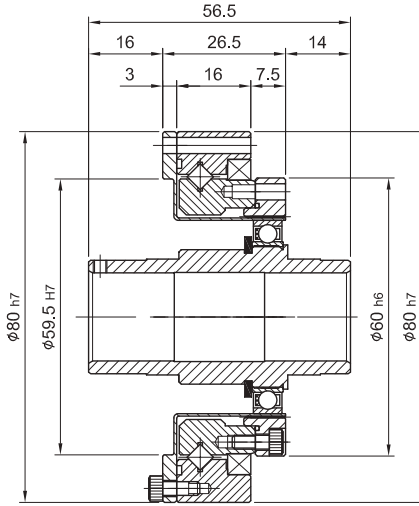
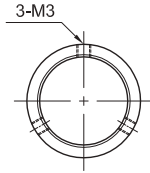
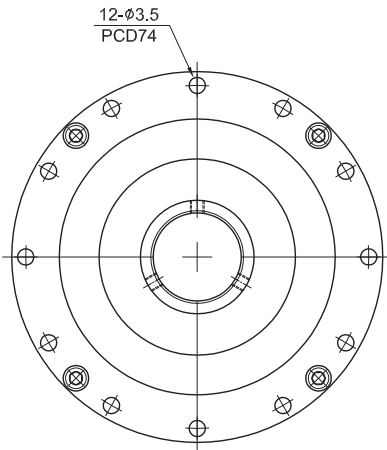
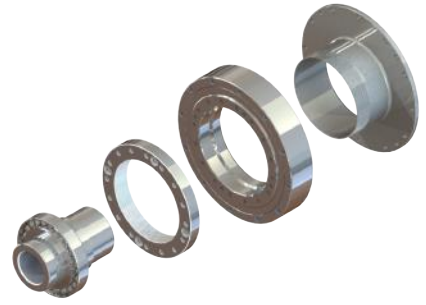


# MODEL : DHF17

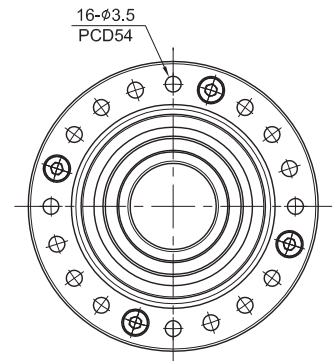
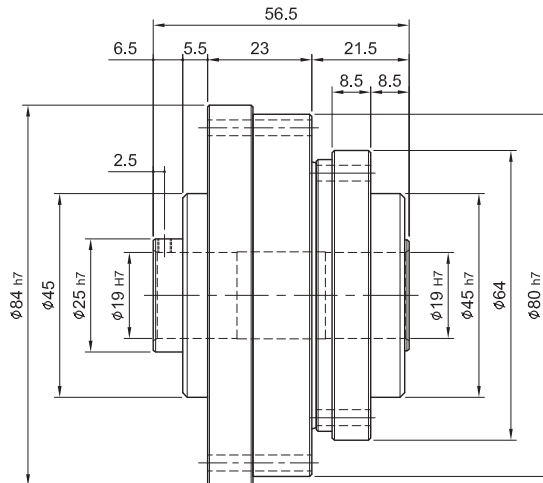
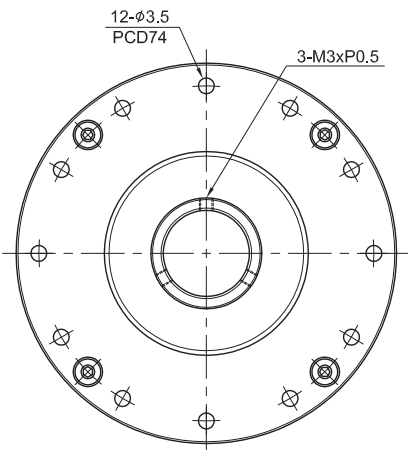
RATIO / ÇEVİRİM : 50.80.100.120



AO



O

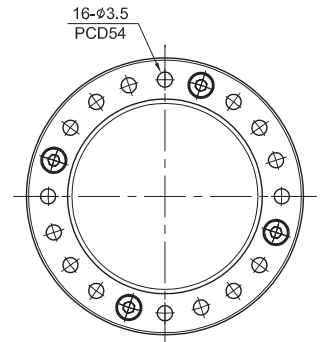
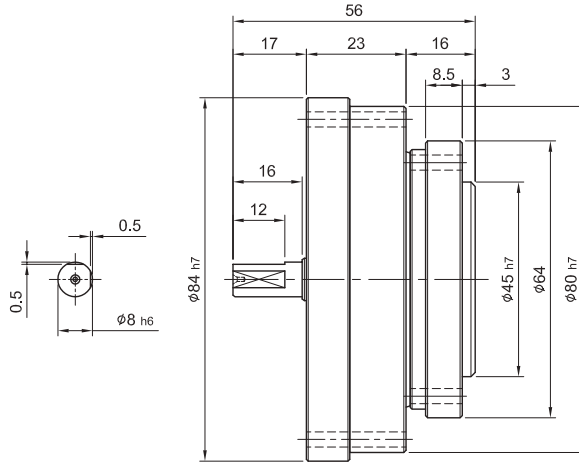
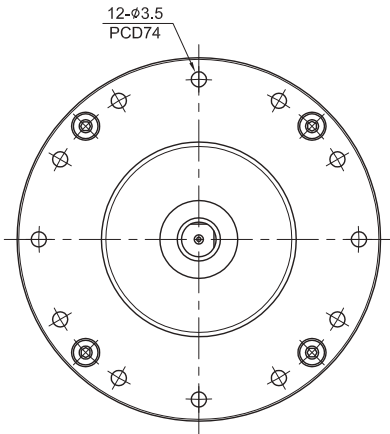


# MODEL : DHF17

RATIO / ÇEVİRİM : 50.80.100.120



S



# MODEL : DHF20

RATIO / ÇEVİRİM : 50.80.100.120

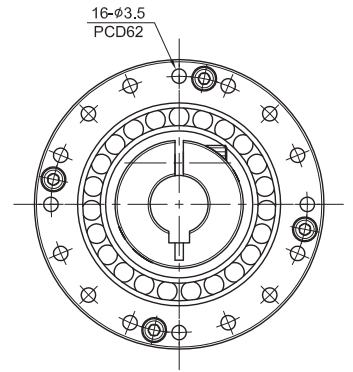
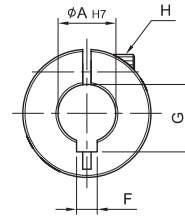
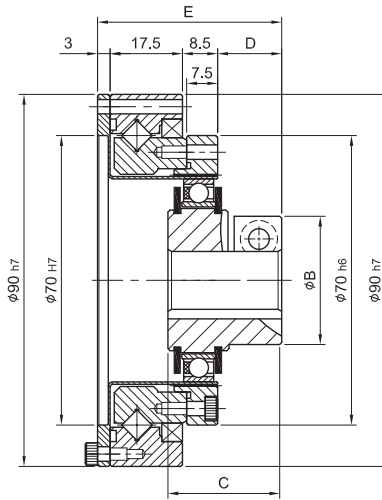
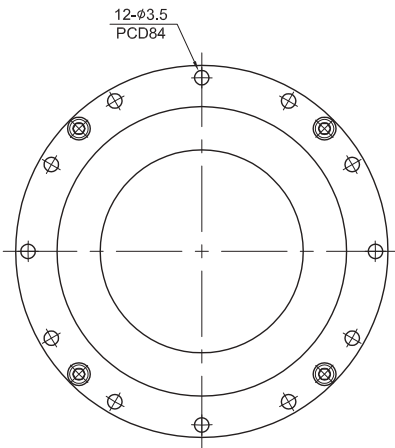


AC

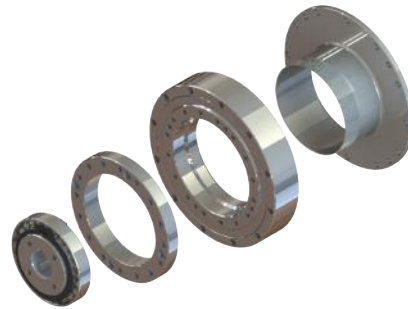


Unit/Birim: mm

Model Code	DHF20-AC
A	8 · 14
B	23.5 · 31
C	25.5 · 27.5
D	13.5 · 15.5
E	42.5 · 44.5
F	3 · 5
G	9.4 · 16.3
H	M4xP0.7 · M5xP0.8

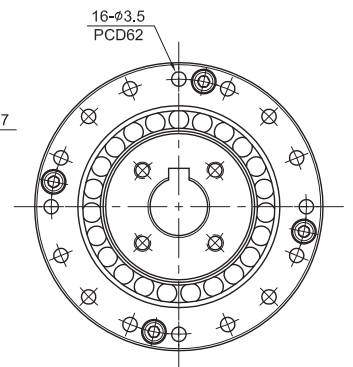
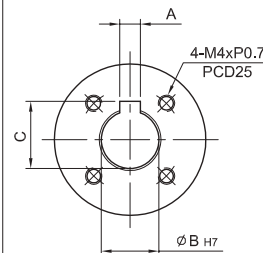
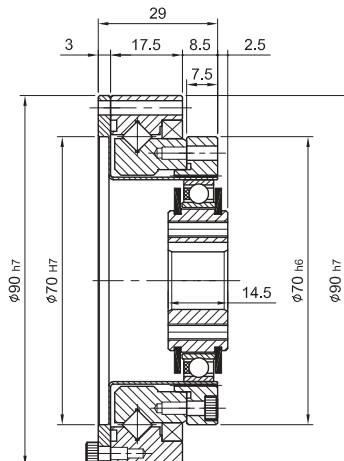
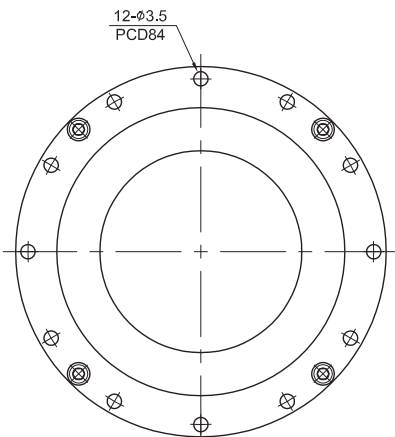


AK



Unit/Birim: mm

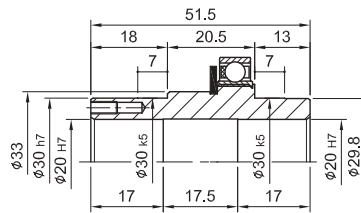
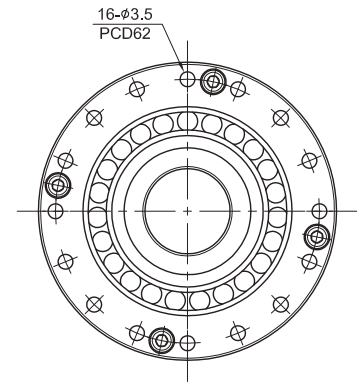
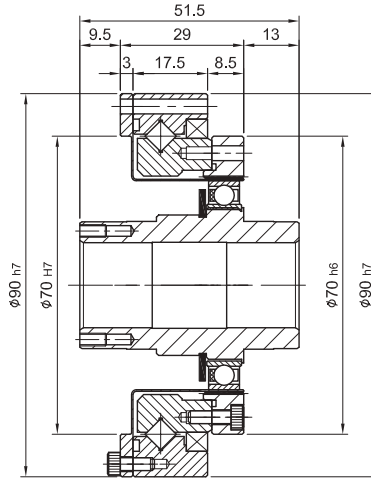
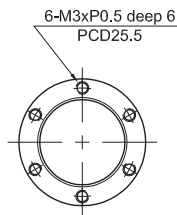
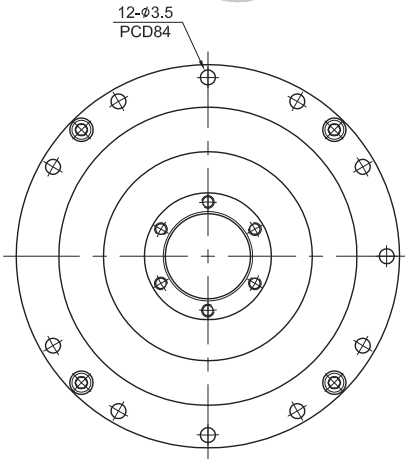
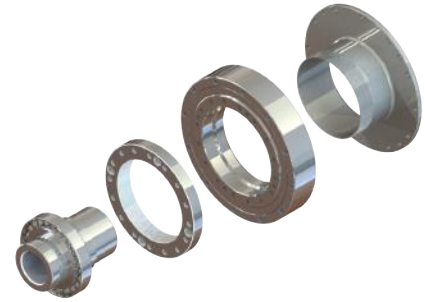
Model Code	DHF20-AK
A	3 · 5
B	8 · 14
C	9.4 · 16.3



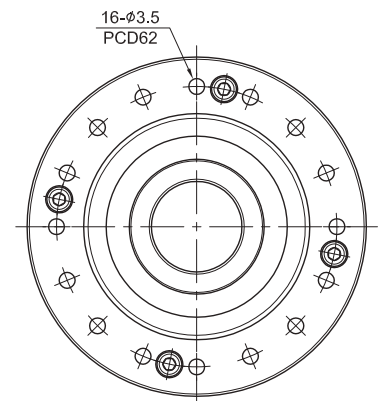
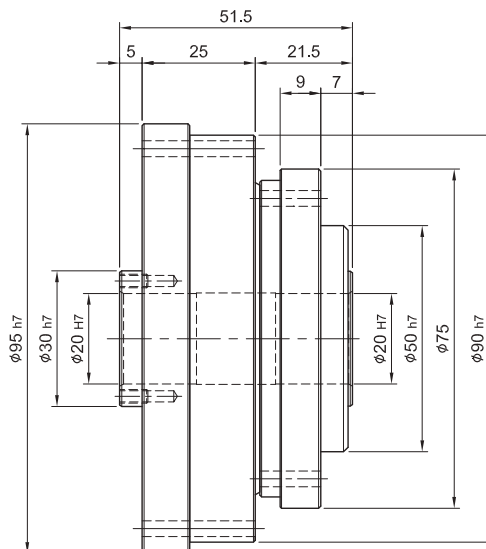
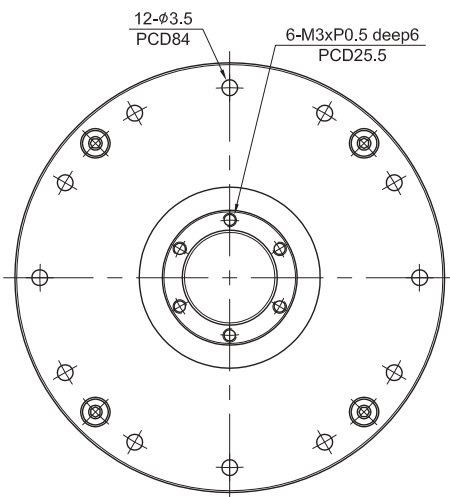
# MODEL : DHF20

RATIO / ÇEVİRİM : 50.80.100.120

AO



O

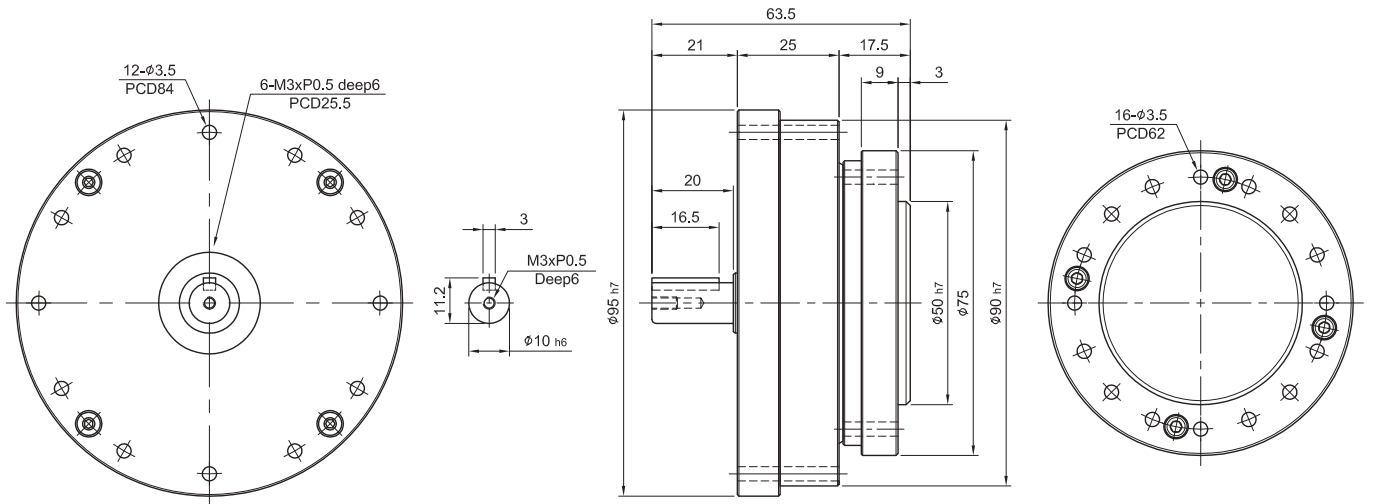


# MODEL : DHF20

RATIO / ÇEVİRİM : 50.80.100.120



S

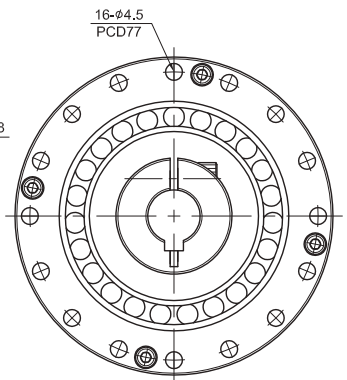
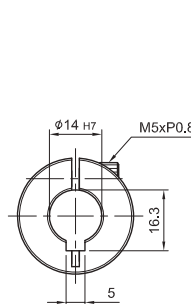
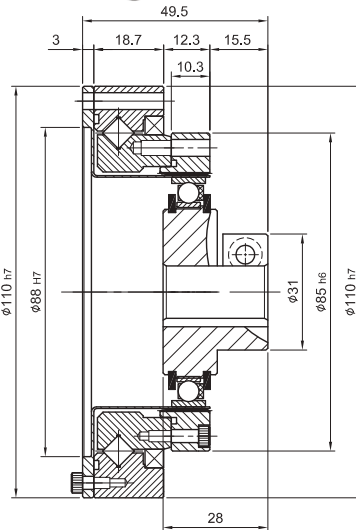
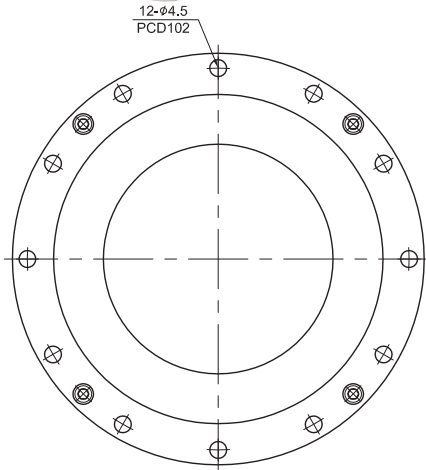


# MODEL : DHF25

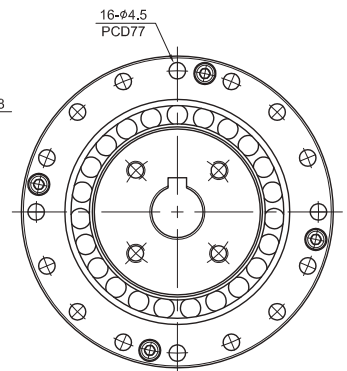
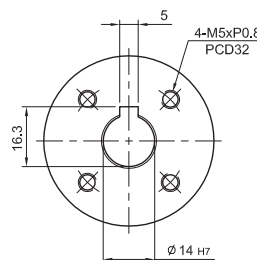
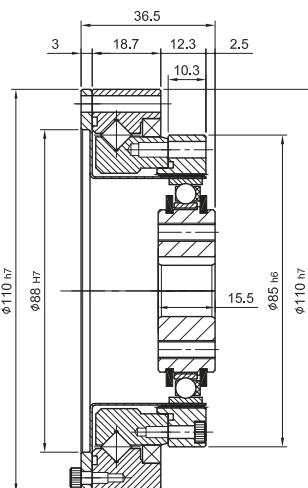
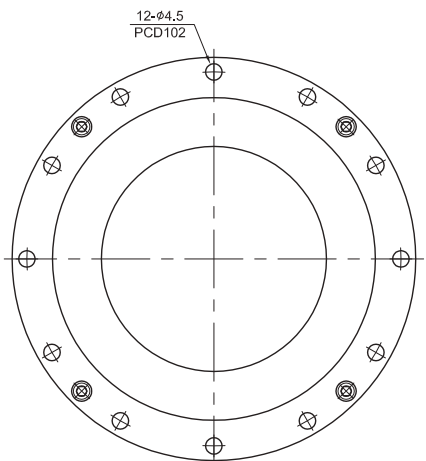
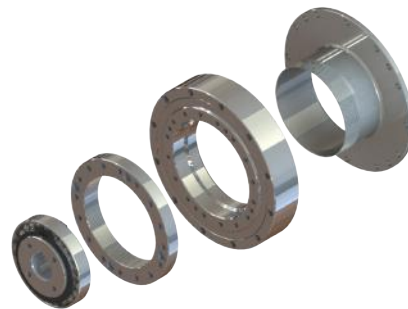
RATIO / ÇEVİRİM : 50.80.100.120



AC



AK



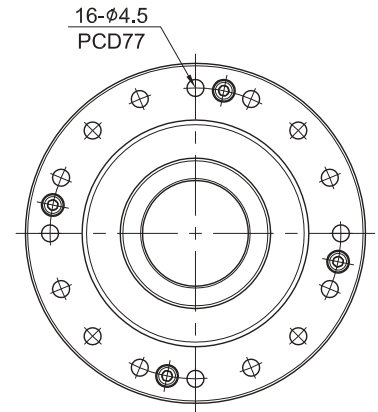
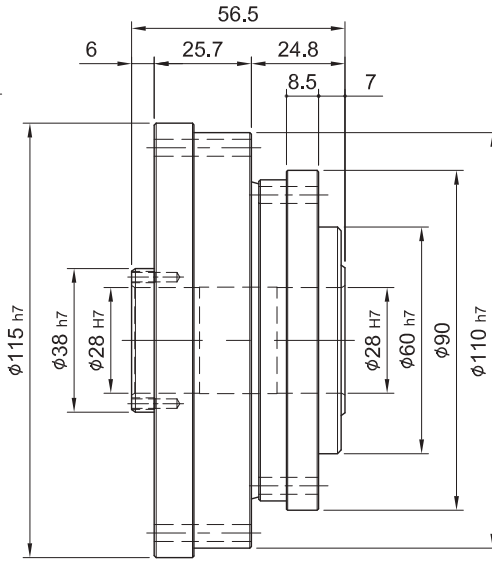
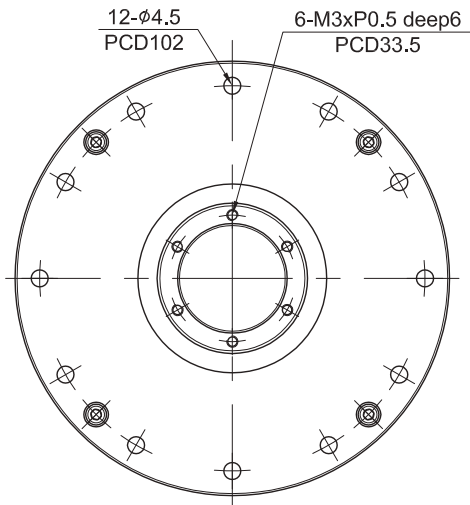
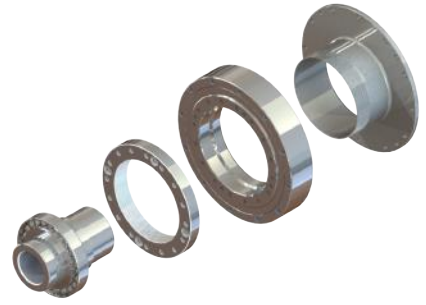


# MODEL : DHF25

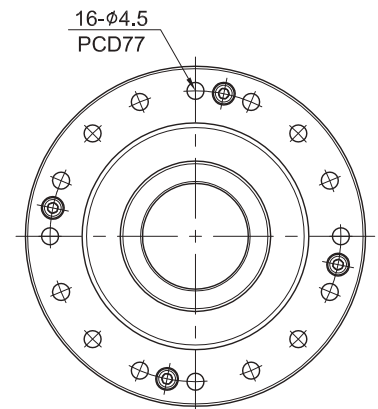
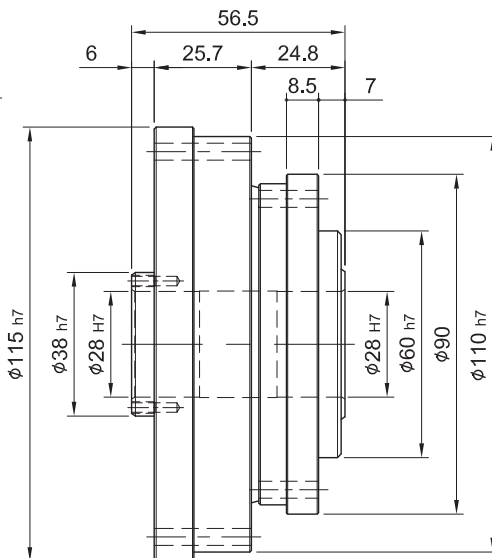
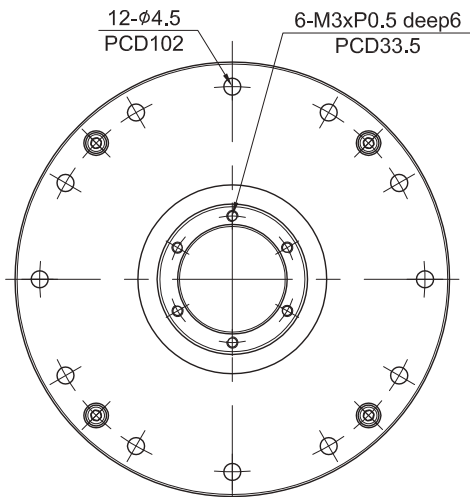
RATIO / ÇEVİRİM : 50.80.100.120



AO



O

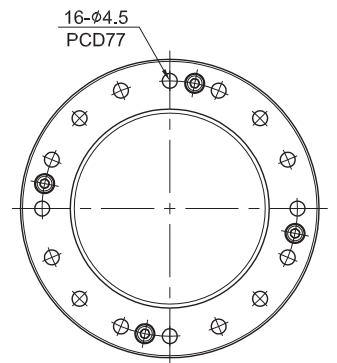
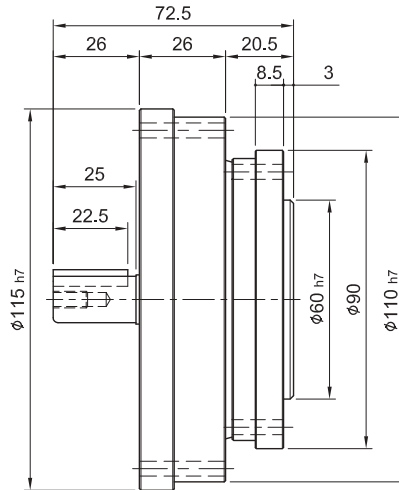
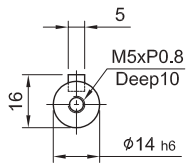
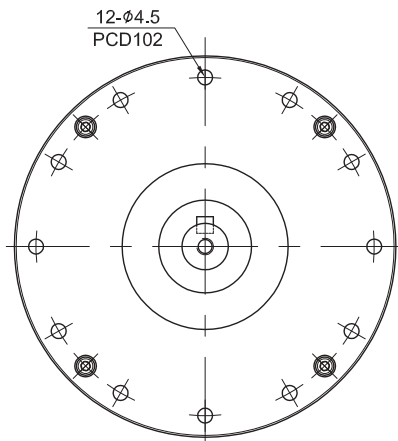


# MODEL : DHF25

RATIO / ÇEVİRİM : 50.80.100.120



S



# MODEL : DHF32

RATIO / ÇEVİRİM : 50.80.100.120

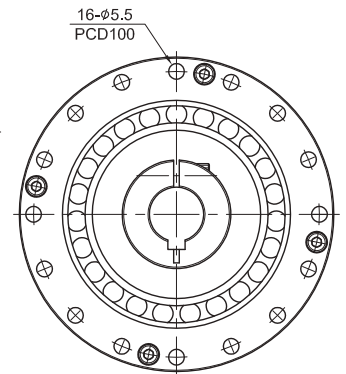
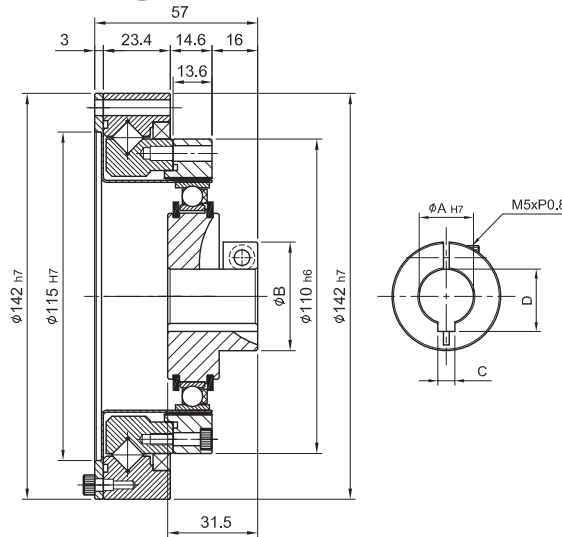
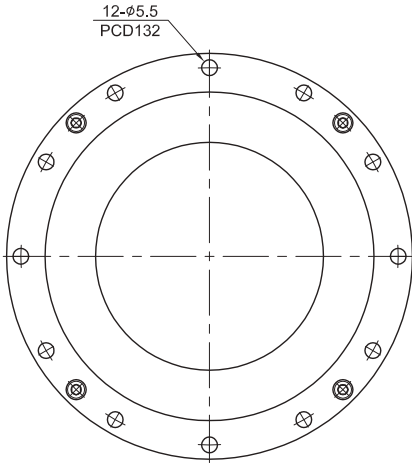


AC



Unit/Birim: mm

Model Code	DHF32-AC
A	14 · 19
B	34 · 38
C	5 · 6
D	16.3 · 21.8

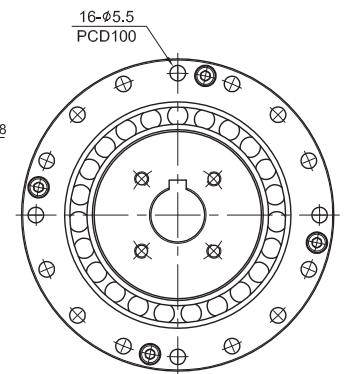
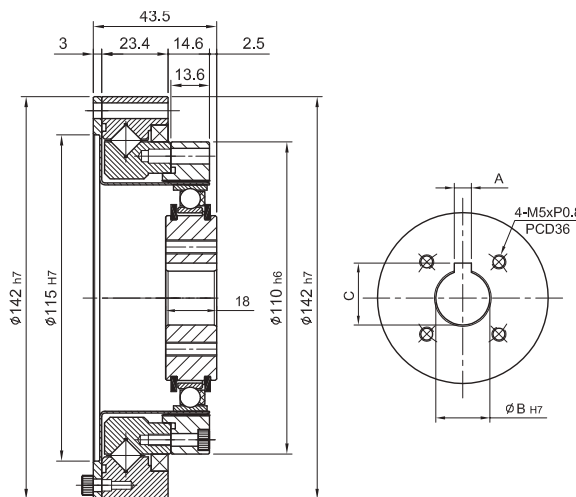
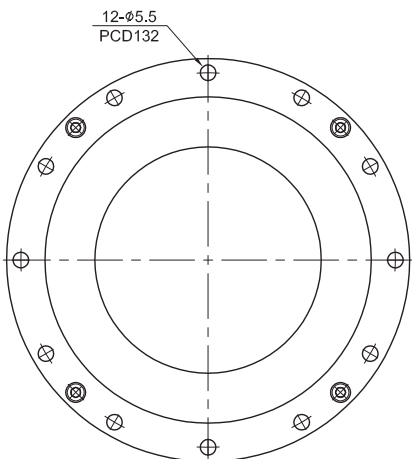


AK



Unit/Birim: mm

Model Code	DHF32-AK
A	5 · 6
B	14 · 19
C	16.3 · 21.8

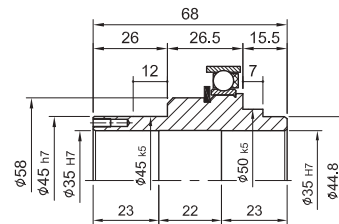
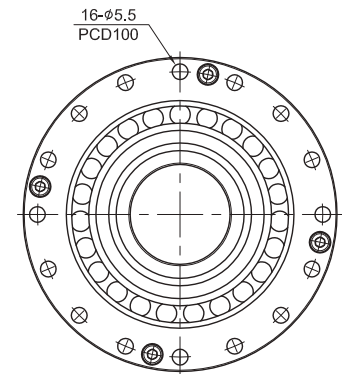
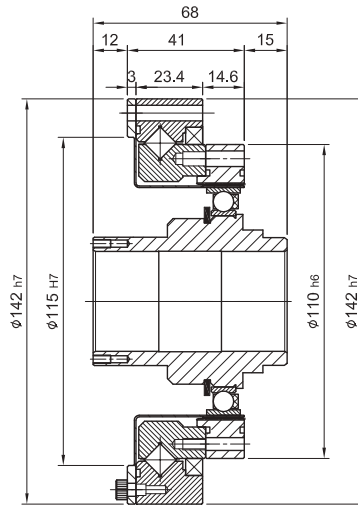
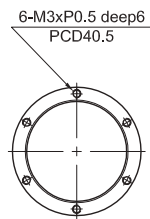
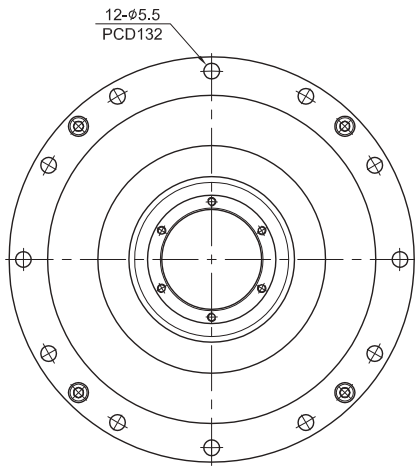
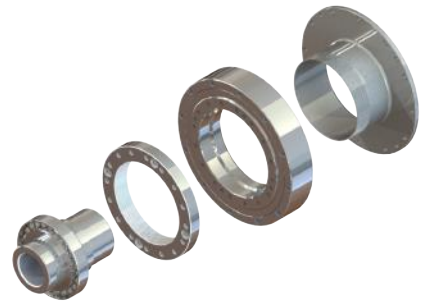


# MODEL : DHF32

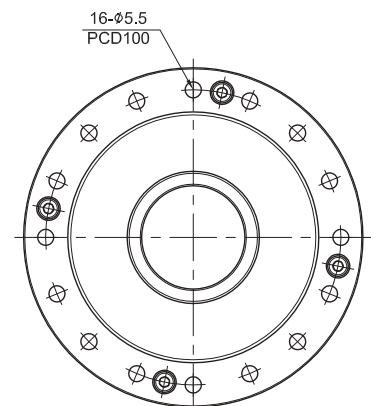
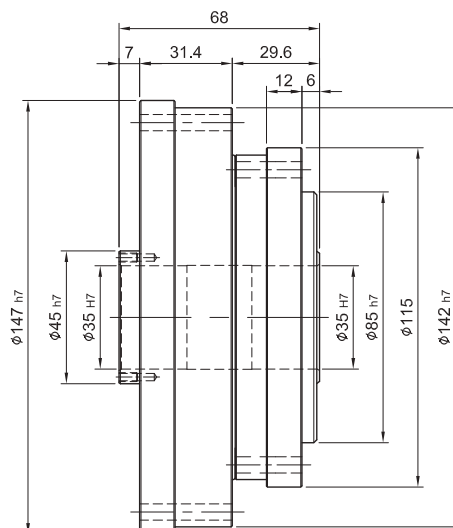
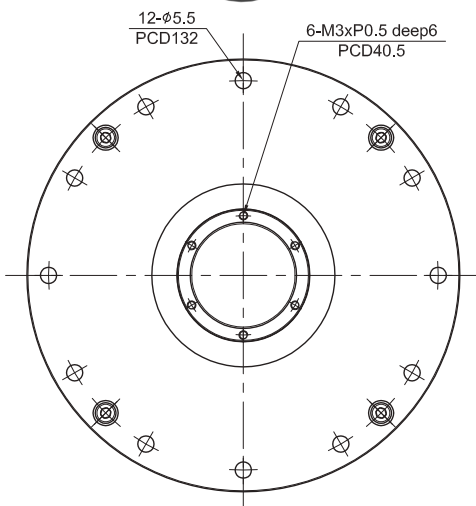
RATIO / ÇEVİRİM : 50.80.100.120



AO



O

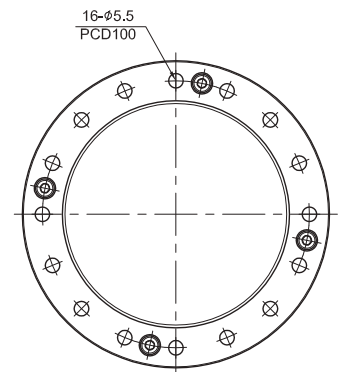
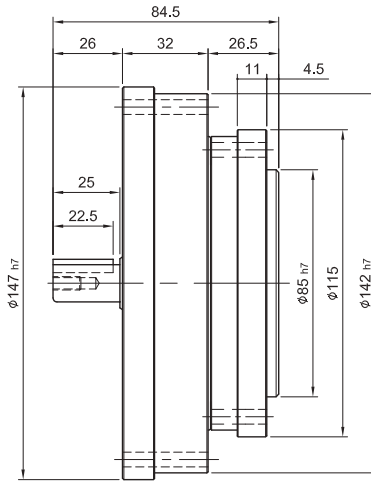
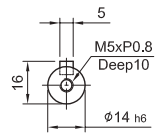
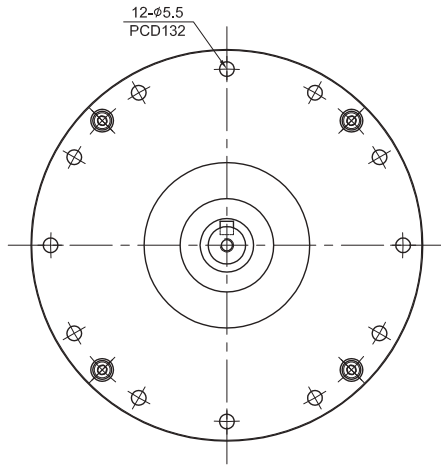


# MODEL : DHF32

RATIO / ÇEVİRİM : 50.80.100.120



S

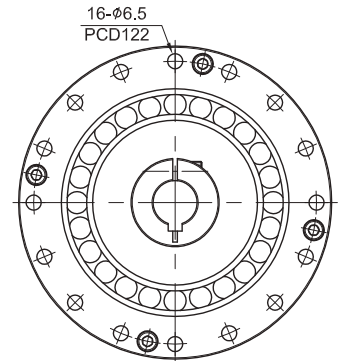
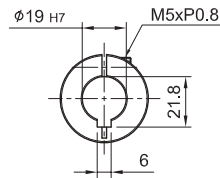
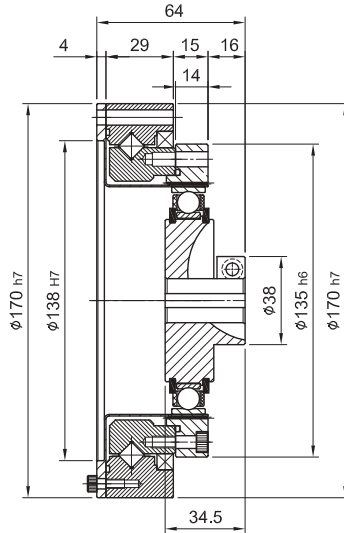
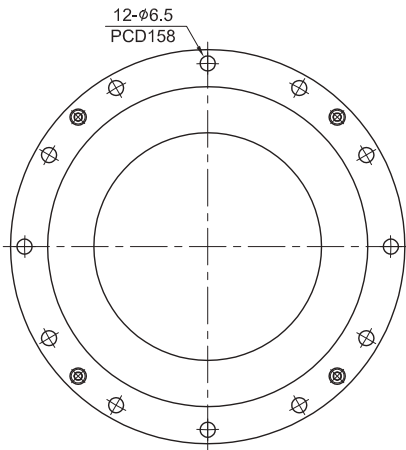


# MODEL : DHF40

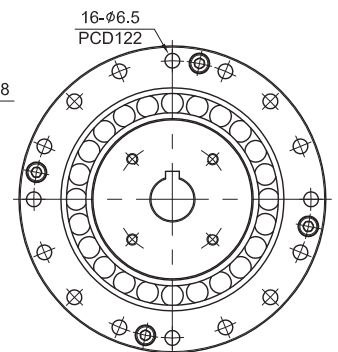
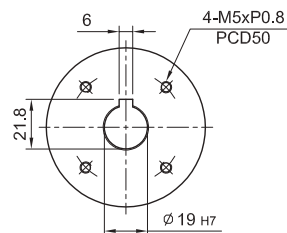
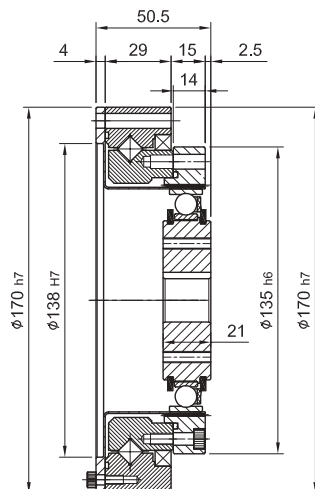
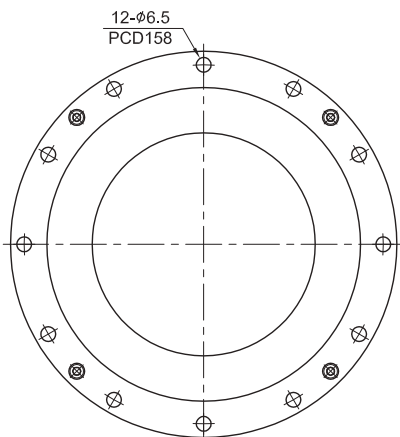
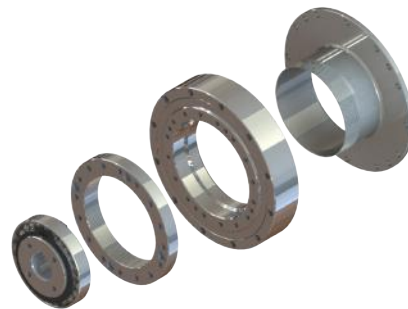
RATIO / ÇEVİRİM : 50.80.100.120



AC



AK



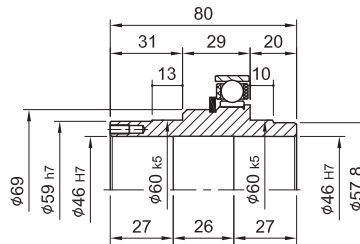
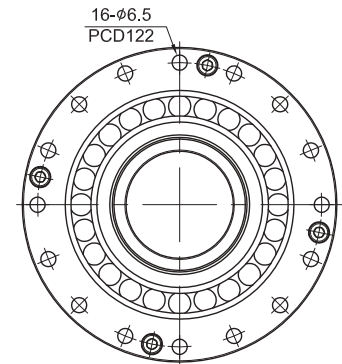
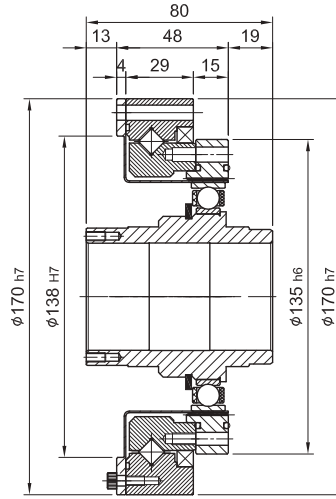
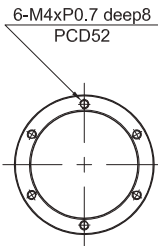
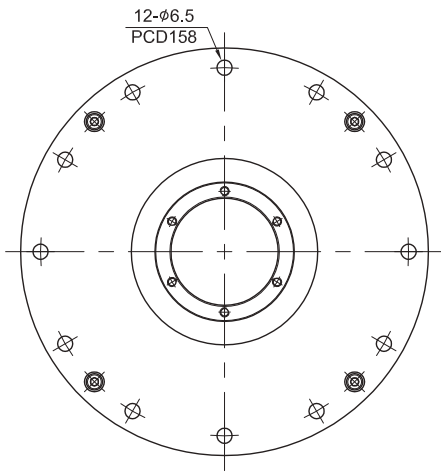


# MODEL : DHF40

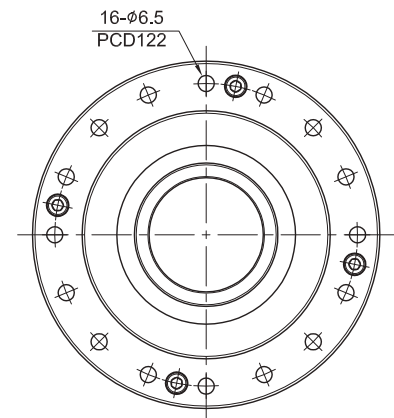
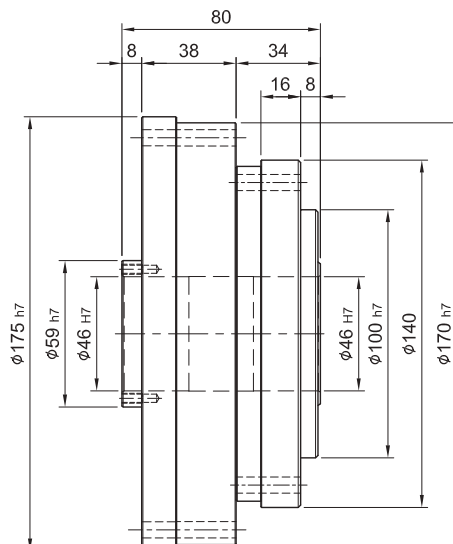
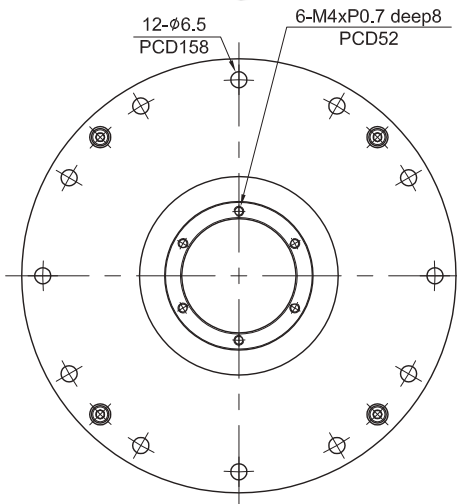
RATIO / ÇEVİRİM : 50.80.100.120



AO



O

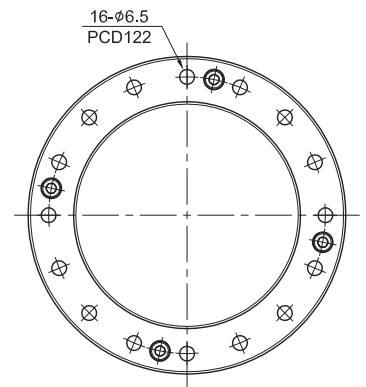
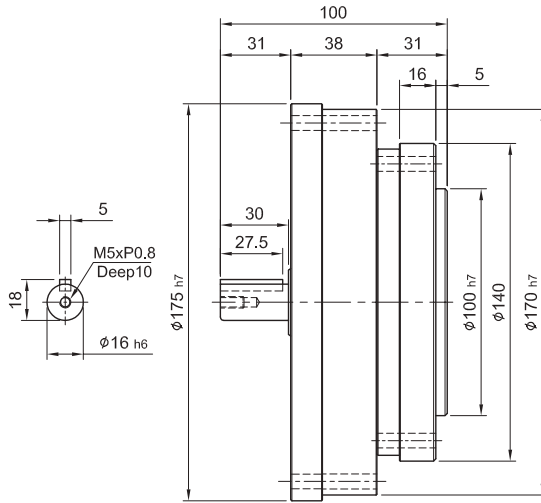
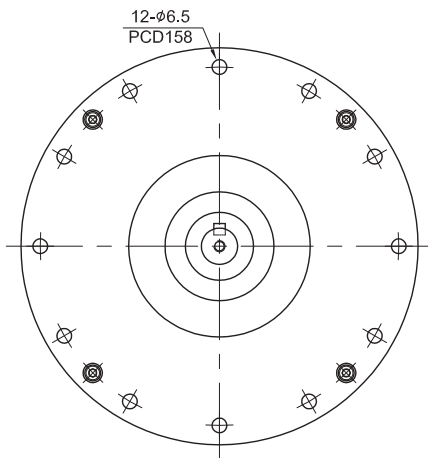


# MODEL : DHF40

RATIO / ÇEVİRİM : 50.80.100.120



S



# MODEL : DHF45

RATIO / ÇEVİRİM : 50.80.100.120



AC



AK



AO



O



S